

Anti-Phospho-E2F1-Thr433 antibody (370-450) (STJ90458)

STJ90458

GENERAL INFORMATION

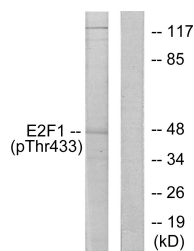
| | |
|--------------------------|---|
| Product Type | Primary antibodies |
| Short Description | Rabbit polyclonal antibody anti-Phospho-Transcription Factor E2f1-Thr433 (370-450) is suitable for use in Western Blot and ELISA research applications. |
| Applications | WB, ELISA |
| Host/Source | Rabbit |
| Reactivity | Human, Mouse |

PRODUCT PROPERTIES

| | |
|----------------------------|--|
| Clonality | Polyclonal |
| Clone ID | |
| Concentration | 1 mg/mL |
| Conjugation | Unconjugated |
| Purification | The antibody was affinity-purified from rabbit anti-serum by affinity-chromatography. |
| Dilution Range | WB 1:500-1:2000 ELISA 1:5000 |
| Formulation | PBS, 50% Glycerol, 0.5% BSA and 0.02% Sodium Azide. |
| Isotype | IgG |
| Storage Instruction | Store at -20°C for up to 1 year from the date of receipt, and avoid repeat freeze-thaw cycles. |

TARGET INFORMATION

| | |
|---------------------------|--|
| Gene ID | 1869 |
| Gene Symbol | E2F1 |
| Uniprot ID | E2F1_HUMAN |
| Immunogen | The antiserum was produced against synthesized peptide derived from human E2F1 around the phosphorylation site of Thr433 at amino acid range 388-437 |
| Immunogen Region | 370-450 |
| Specificity | Phospho-E2F1-Thr433 polyclonal antibody (Transcription Factor E2f1) binds to endogenous Transcription Factor E2f1 at the amino acid region 370-450 only when phosphorylated at Thr433. |
| Immunogen Sequence | |



Western blot analysis of lysates from HeLa cells treated with Etoposide 25uM 24h, using E2F1 (Phospho-Thr433) Antibody. The lane on the right is blocked with the phospho peptide.