

## Anti-Phospho-ABL1-Tyr204 antibody (130-210) (STJ90452)

STJ90452

### GENERAL INFORMATION

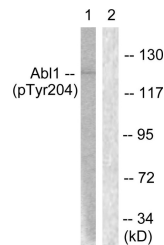
<b>Product Type</b>	Primary antibodies
<b>Short Description</b>	Rabbit polyclonal antibody anti-Phospho-Tyrosine-Protein Kinase Abl1-Tyr204 (130-210) is suitable for use in Western Blot, Immunohistochemistry, Immunofluorescence and ELISA research applications.
<b>Applications</b>	WB, IHC-P, IF-P, ELISA
<b>Host/Source</b>	Rabbit
<b>Reactivity</b>	Human, Mouse, Rat, Monkey

### PRODUCT PROPERTIES

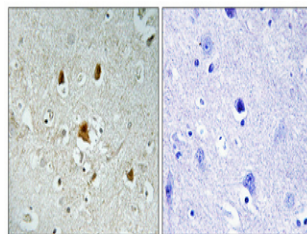
<b>Clonality</b>	Polyclonal
<b>Clone ID</b>	
<b>Concentration</b>	1 mg/mL
<b>Conjugation</b>	Unconjugated
<b>Purification</b>	The antibody was affinity-purified from rabbit anti-serum by affinity-chromatography.
<b>Dilution Range</b>	WB 1:500-1:2000 IHC 1:100-1:300 ELISA 1:5000
<b>Formulation</b>	PBS, 50% Glycerol, 0.5% BSA and 0.02% Sodium Azide.
<b>Isotype</b>	IgG
<b>Storage Instruction</b>	Store at -20°C for up to 1 year from the date of receipt, and avoid repeat freeze-thaw cycles.

### TARGET INFORMATION

<b>Gene ID</b>	25
<b>Gene Symbol</b>	ABL1
<b>Uniprot ID</b>	ABL1_HUMAN
<b>Immunogen</b>	The antiserum was produced against synthesized peptide derived from human Abl around the phosphorylation site of Tyr204 at amino acid range 156-205
<b>Immunogen Region</b>	130-210
<b>Specificity</b>	Phospho-ABL1-Tyr204 polyclonal antibody (Tyrosine-Protein Kinase Abl1) binds to endogenous Tyrosine-Protein Kinase Abl1 at the amino acid region 130-210 only when phosphorylated at Tyr204.
<b>Immunogen Sequence</b>	



Western blot analysis of lysates from COS7 cells treated with Adriamycin 0.5ug/ml 24h, using Abl1 (Phospho-Tyr204) Antibody. The lane on the right is blocked with the phospho peptide.



Immunohistochemical analysis of paraffin-embedded Human brain. Antibody was diluted at 1:100 (4°C overnight). High-pressure and temperature Tris-EDTA, pH8.0 was used for antigen retrieval. Negative control (right) obtained from antibody was pre-absorbed by immunogen peptide.