

Anti-Phospho-CCR5-Ser349 antibody (280-360) (STJ90450)

STJ90450

GENERAL INFORMATION

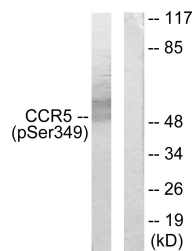
Product Type	Primary antibodies
Short Description	Rabbit polyclonal antibody anti-Phospho-C-C Chemokine Receptor Type 5-Ser349 (280-360) is suitable for use in Western Blot and ELISA research applications.
Applications	WB, ELISA
Host/Source	Rabbit
Reactivity	Human, Rat, Mouse

PRODUCT PROPERTIES

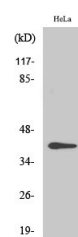
Clonality	Polyclonal
Clone ID	
Concentration	1 mg/mL
Conjugation	Unconjugated
Purification	The antibody was affinity-purified from rabbit anti-serum by affinity-chromatography.
Dilution	WB 1:500-1:2000
Range	ELISA 1:5000
Formulation	PBS, 50% Glycerol, 0.5% BSA and 0.02% Sodium Azide.
Isotype	IgG
Storage Instruction	Store at -20°C for up to 1 year from the date of receipt, and avoid repeat freeze-thaw cycles.

TARGET INFORMATION

Gene ID	1234
Gene Symbol	CCR5
Uniprot ID	CCR5_HUMAN
Immunogen	The antiserum was produced against synthesized peptide derived from human CCR5 around the phosphorylation site of Ser349 at amino acid range 303-352
Immunogen Region	280-360
Specificity	Phospho-CCR5-Ser349 polyclonal antibody (C-C Chemokine Receptor Type 5) binds to endogenous C-C Chemokine Receptor Type 5 at the amino acid region 280-360 only when phosphorylated at Ser349.
Immunogen Sequence	



Western blot analysis of lysates from RAW264.7 cells treated with PMA 125ng/ml 30', using CCR5 (Phospho-Ser349) Antibody. The lane on the right is blocked with the phospho peptide.



Western blot analysis of various cells using Phospho-CCR-5 (S349) Polyclonal Antibody diluted at 1: 2000.