

## Anti-Phospho-CaMKII Alpha/Beta/Delta-Thr305 antibody (240-320) (STJ90439)

STJ90439

### GENERAL INFORMATION

<b>Product Type</b>	Primary antibodies
<b>Short Description</b>	Rabbit polyclonal antibody anti-Phospho-Calcium/calmodulin-dependent protein kinase type II subunit alpha and Calcium/calmodulin-dependent protein kinase type II subunit beta and Calcium/calmodulin-dependent protein kinase type II subunit delta-Thr30
<b>Applications</b>	WB, IHC-P, IF-P, ELISA
<b>Host/Source</b>	Rabbit
<b>Reactivity</b>	Human, Mouse, Rat

### PRODUCT PROPERTIES

<b>Clonality</b>	Polyclonal
<b>Clone ID</b>	
<b>Concentration</b>	1 mg/mL
<b>Conjugation</b>	Unconjugated
<b>Purification</b>	The antibody was affinity-purified from rabbit anti-serum by affinity-chromatography.
<b>Dilution Range</b>	WB 1:500-1:2000 IHC 1:100-1:300 ELISA 1:5000
<b>Formulation</b>	PBS, 50% Glycerol, 0.5% BSA and 0.02% Sodium Azide.
<b>Isotype</b>	IgG
<b>Storage Instruction</b>	Store at -20°C for up to 1 year from the date of receipt, and avoid repeat freeze-thaw cycles.

### TARGET INFORMATION

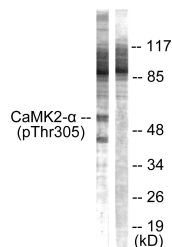
**Gene ID** [816](#)  
[815](#)  
[817](#)  
[CAMK2B](#)  
[CAMK2A](#)  
[KCC2B\\_HUMAN](#)  
[KCC2A\\_HUMAN](#)  
[KCC2D\\_HUMAN](#)

**Immunogen** The antiserum was produced against synthesized peptide derived from human CaMK2 alpha/beta/delta around the phosphorylation site of Thr305 at amino acid range 271-320

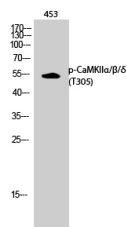
**Immunogen Region** 240-320

**Specificity** Phospho-CaMKII Alpha/Beta/Delta-Thr305 polyclonal antibody (Calcium/calmodulin-dependent protein kinase type II subunit alpha and Calcium/calmodulin-dependent protein kinase type II subunit beta and Calcium/calmodulin-dependent protein kinase type II

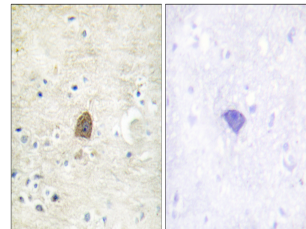
**Immunogen Sequence**



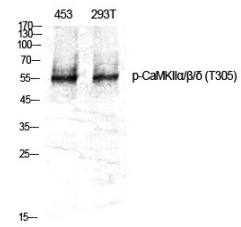
Western blot analysis of lysates from NIH3T3 cells using CaMK2 alpha/beta/delta (Phospho-Thr305) Antibody. The lane on the right is blocked with the phospho peptide.



Western blot analysis of 453 cells using Phospho-CaMKII Alpha/Beta/Delta (T305) Polyclonal Antibody diluted at 1: 1000



Immunohistochemistry analysis of paraffin-embedded human brain, using CaMK2 alpha/beta/delta (Phospho-Thr305) Antibody. The picture on the right is blocked with the phospho peptide.



Western blot analysis of various cells using Phospho-CaMKII Alpha/Beta/Delta (T305) Polyclonal Antibody diluted at 1: 1000

This product is suitable for in-vitro studies under the RESEARCH USE ONLY [RUO] licence. This product must not be used as for diagnostic or other medical purposes.  
 St John's Laboratory Ltd, Knowledge Dock Business Centre, University Way, London, E16 2RD | Tel: 0208 223 3081