

Anti-Phospho-VASP-Ser157 antibody (100-180) (STJ90431)

STJ90431

GENERAL INFORMATION

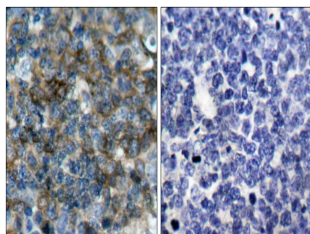
Product Type	Primary antibodies
Short Description	Rabbit polyclonal antibody anti-Phospho-Vasodilator-Stimulated Phosphoprotein-Ser157 (100-180) is suitable for use in Western Blot, Immunohistochemistry, Immunofluorescence and ELISA research applications.
Applications	WB, IHC-P, IF-P, ELISA
Host/Source	Rabbit
Reactivity	Human, Mouse, Rat, Monkey

PRODUCT PROPERTIES

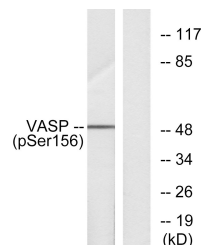
Clonality	Polyclonal
Clone ID	
Concentration	1 mg/mL
Conjugation	Unconjugated
Purification	The antibody was affinity-purified from rabbit anti-serum by affinity-chromatography.
Dilution	WB 1:500-1:2000
Range	IHC 1:100-1:300 ELISA 1:5000
Formulation	PBS, 50% Glycerol, 0.5% BSA and 0.02% Sodium Azide.
Isotype	IgG
Storage Instruction	Store at -20°C for up to 1 year from the date of receipt, and avoid repeat freeze-thaw cycles.

TARGET INFORMATION

Gene ID	7408
Gene Symbol	VASP
Uniprot ID	VASP_HUMAN
Immunogen	The antiserum was produced against synthesized peptide derived from human VASP around the phosphorylation site of Ser157 at amino acid range 124-173
Immunogen Region	100-180
Specificity	Phospho-VASP-Ser157 polyclonal antibody (Vasodilator-Stimulated Phosphoprotein) binds to endogenous Vasodilator-Stimulated Phosphoprotein at the amino acid region 100-180 only when phosphorylated at Ser157.
Immunogen Sequence	



Immunohistochemistry analysis of paraffin-embedded human tonsil, using VASP (Phospho-Ser157) Antibody. The picture on the right is blocked with the phospho peptide.



Western blot analysis of lysates from NIH/3T3 cells treated with forskolin 40 μM 30', using VASP (Phospho-Ser157) Antibody. The lane on the right is blocked with the phospho peptide.



Western blot analysis of various cells using Phospho-VASP (S157) Polyclonal Antibody