

Anti-Phospho-MAPT-Ser262 antibody (520-600) (STJ90421)

STJ90421

GENERAL INFORMATION

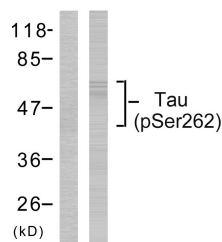
Product Type	Primary antibodies
Short Description	Rabbit polyclonal antibody anti-Phospho-Microtubule-Associated Protein Tau-Ser262 (520-600) is suitable for use in Western Blot and ELISA research applications.
Applications	WB, ELISA
Host/Source	Rabbit
Reactivity	Human, Mouse, Rat

PRODUCT PROPERTIES

Clonality	Polyclonal
Clone ID	
Concentration	1 mg/mL
Conjugation	Unconjugated
Purification	The antibody was affinity-purified from rabbit anti-serum by affinity-chromatography.
Dilution	WB 1:500-1:2000
Range	ELISA 1:5000
Formulation	PBS, 50% Glycerol, 0.5% BSA and 0.02% Sodium Azide.
Isotype	IgG
Storage	Store at -20°C for up to 1 year from the date of receipt, and avoid repeat freeze-thaw cycles.
Instruction	

TARGET INFORMATION

Gene ID	4137
Gene Symbol	MAPT
Uniprot ID	TAU_HUMAN
Immunogen	The antiserum was produced against synthesized peptide derived from human Tau around the phosphorylation site of Ser262 at amino acid range 551-600
Immunogen Region	520-600
Specificity	Phospho-MAPT-Ser262 polyclonal antibody (Microtubule-Associated Protein Tau) binds to endogenous Microtubule-Associated Protein Tau at the amino acid region 520-600 only when phosphorylated at Ser262.
Immunogen Sequence	



Western blot analysis of lysates from HeLa cells, using Tau (Phospho-Ser262) Antibody. The lane on the left is blocked with the phospho peptide.