

Anti-Phospho-MAPT-Ser235 antibody (500-580) (STJ90420)

STJ90420

GENERAL INFORMATION

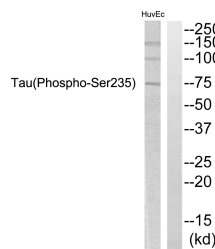
Product Type	Primary antibodies
Short Description	Rabbit polyclonal antibody anti-Phospho-Microtubule-Associated Protein Tau-Ser235 (500-580) is suitable for use in Western Blot and ELISA research applications.
Applications	WB, ELISA
Host/Source	Rabbit
Reactivity	Human, Mouse, Rat

PRODUCT PROPERTIES

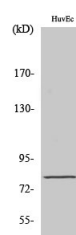
Clonality	Polyclonal
Clone ID	
Concentration	1 mg/mL
Conjugation	Unconjugated
Purification	The antibody was affinity-purified from rabbit anti-serum by affinity-chromatography.
Dilution	WB 1:500-1:2000
Range	ELISA 1:20000
Formulation	PBS, 50% Glycerol, 0.5% BSA and 0.02% Sodium Azide.
Isotype	IgG
Storage	Store at -20°C for up to 1 year from the date of receipt, and avoid repeat freeze-thaw cycles.
Instruction	

TARGET INFORMATION

Gene ID	4137
Gene Symbol	MAPT
Uniprot ID	TAU_HUMAN
Immunogen	The antiserum was produced against synthesized peptide derived from human Tau around the phosphorylation site of Ser235 at amino acid range 526-575
Immunogen Region	500-580
Specificity	Phospho-MAPT-Ser235 polyclonal antibody (Microtubule-Associated Protein Tau) binds to endogenous Microtubule-Associated Protein Tau at the amino acid region 500-580 only when phosphorylated at Ser235.
Immunogen Sequence	



Western blot analysis of lysates from HUVEC cells, using Tau (Phospho-Ser235) Antibody. The lane on the right is blocked with the phospho peptide.



Western blot analysis of various cells using Phospho-Tau (S235) Polyclonal Antibody diluted at 1: 1000

This product is suitable for in-vitro studies under the RESEARCH USE ONLY [RUO] licence. This product must not be used as for diagnostic or other medical purposes.
 St John's Laboratory Ltd, Knowledge Dock Business Centre, University Way, London, E16 2RD | Tel: 0208 223 3081