

Anti-Phospho-STAT5A-Ser780 antibody (720-800) (STJ90413)

STJ90413

GENERAL INFORMATION

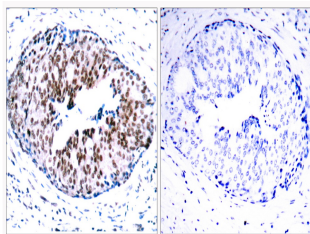
Product Type	Primary antibodies
Short Description	Rabbit polyclonal antibody anti-Phospho-Signal Transducer And Activator Of Transcription 5a-Ser780 (720-800) is suitable for use in Western Blot, Immunohistochemistry, Immunofluorescence, Immunoprecipitation and ELISA research applications.
Applications	WB, IHC-P, IF-P, IP, ELISA
Host/Source	Rabbit
Reactivity	Human, Mouse, Rat

PRODUCT PROPERTIES

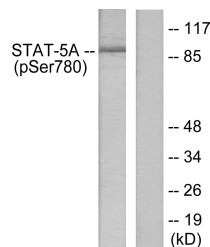
Clonality	Polyclonal
Clone ID	
Concentration	1 mg/mL
Conjugation	Unconjugated
Purification	The antibody was affinity-purified from rabbit anti-serum by affinity-chromatography.
Dilution Range	WB 1:500-1:2000 IHC 1:100-1:300 IP 2-5 ug/mg ELISA 1:10000
Formulation	PBS, 50% Glycerol, 0.5% BSA and 0.02% Sodium Azide.
Isotype	IgG
Storage Instruction	Store at -20°C for up to 1 year from the date of receipt, and avoid repeat freeze-thaw cycles.

TARGET INFORMATION

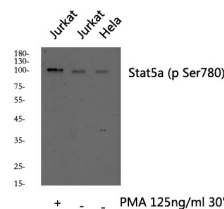
Gene ID	6776
Gene Symbol	STAT5A
Uniprot ID	STA5A_HUMAN
Immunogen	The antiserum was produced against synthesized peptide derived from human STAT5A around the phosphorylation site of Ser780 at amino acid range 745-794
Immunogen Region	720-800
Specificity	Phospho-STAT5A-Ser780 polyclonal antibody (Signal Transducer And Activator Of Transcription 5a) binds to endogenous Signal Transducer And Activator Of Transcription 5a at the amino acid region 720-800 only when phosphorylated at Ser780.
Immunogen Sequence	



Immunohistochemistry analysis of paraffin-embedded human breast carcinoma, using STAT5A (Phospho-Ser780) Antibody. The picture on the right is blocked with the phospho peptide.



Western blot analysis of lysates from HeLa cells, using STAT5A (Phospho-Ser780) Antibody. The lane on the right is blocked with the phospho peptide.



Western blot analysis of Stat5a (phospho Ser780) Polyclonal Antibody, using HeLa, Jurkat cell treated or untreated with PMA 125ng/ml 30', 4°C over night, secondary antibody (cat: NA was diluted at 1:10000, 37°C 1hour).