

## Anti-Phospho-STAT3-Ser727 antibody (670-750) (STJ90410)

STJ90410

### GENERAL INFORMATION

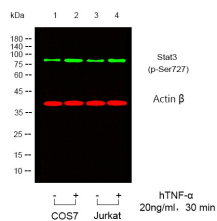
<b>Product Type</b>	Primary antibodies
<b>Short Description</b>	Rabbit polyclonal antibody anti-Phospho-Signal Transducer And Activator Of Transcription 3-Ser727 (670-750) is suitable for use in Immunofluorescence, Immunocytochemistry, Western Blot, Immunohistochemistry, Immunoprecipitation and ELISA research app
<b>Applications</b>	IF, ICC, WB, IHC-P, IP, ELISA
<b>Host/Source</b>	Rabbit
<b>Reactivity</b>	Human, Mouse, Rat, Monkey

### PRODUCT PROPERTIES

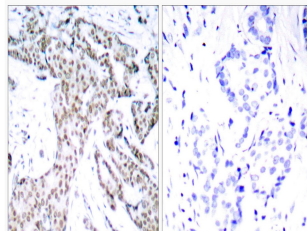
<b>Clonality</b>	Polyclonal
<b>Clone ID</b>	
<b>Concentration</b>	1 mg/mL
<b>Conjugation</b>	Unconjugated
<b>Purification</b>	The antibody was affinity-purified from rabbit anti-serum by affinity-chromatography.
<b>Dilution</b>	IF 1:50-200
<b>Range</b>	WB 1:500-1:2000 IHC 1:100-1:300 IP 2-5 ug/mg ELISA 1:10000
<b>Formulation</b>	PBS, 50% Glycerol, 0.5% BSA and 0.02% Sodium Azide.
<b>Isotype</b>	IgG
<b>Storage Instruction</b>	Store at -20°C for up to 1 year from the date of receipt, and avoid repeat freeze-thaw cycles.

### TARGET INFORMATION

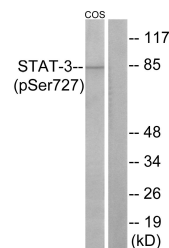
<b>Gene ID</b>	6774
<b>Gene Symbol</b>	STAT3
<b>Uniprot ID</b>	STAT3_HUMAN
<b>Immunogen</b>	The antiserum was produced against synthesized peptide derived from human STAT3 around the phosphorylation site of Ser727 at amino acid range 694-743
<b>Immunogen Region</b>	670-750
<b>Specificity</b>	Phospho-STAT3-Ser727 polyclonal antibody (Signal Transducer And Activator Of Transcription 3) binds to endogenous Signal Transducer And Activator Of Transcription 3 at the amino acid region 670-750 only when phosphorylated at Ser727.
<b>Immunogen Sequence</b>	



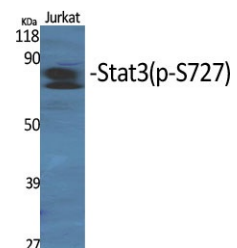
Western blot analysis of lysates from COS7, Jurkat cells, treated or untreated with TNF $\alpha$ . (Green) primary antibody was diluted at 1:1000, 4°C over night, secondary antibody was diluted at 1:10000, 37°C 1hour. (Red) loading control antibody was diluted at 1:5000 as loading control, 4°C over night, secondary antibody was diluted at 1:10000, 37°C 1hour.



Immunohistochemistry analysis of paraffin-embedded human breast carcinoma, using STAT3 (Phospho-Ser727) Antibody. The picture on the right is blocked with the phospho peptide.



Western blot analysis of lysates from COS7 cells, using STAT3 (Phospho-Ser727) Antibody. The lane on the right is blocked with the phospho peptide.



Western blot analysis of various cells using Phospho-Stat3 (S727) Polyclonal Antibody diluted at 1: 2000

This product is suitable for in-vitro studies under the RESEARCH USE ONLY [RUO] licence. This product must not be used as for diagnostic or other medical purposes.  
St John's Laboratory Ltd, Knowledge Dock Business Centre, University Way, London, E16 2RD | Tel: 0208 223 3081