

Anti-Phospho-STAT1-Tyr701 antibody (640-720) (STJ90409)

STJ90409

GENERAL INFORMATION

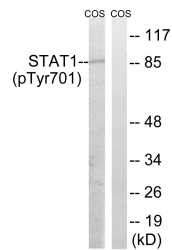
Product Type	Primary antibodies
Short Description	Rabbit polyclonal antibody anti-Phospho-Signal Transducer And Activator Of Transcription 1-Alpha/Beta-Tyr701 (640-720) is suitable for use in Immunofluorescence, Immunocytochemistry, Western Blot, Immunohistochemistry, Immunoprecipitation and ELISA r
Applications	IF, ICC, WB, IHC-P, IP, ELISA
Host/Source	Rabbit
Reactivity	Human, Mouse, Rat, Monkey

PRODUCT PROPERTIES

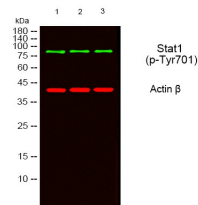
Clonality	Polyclonal
Clone ID	
Concentration	1 mg/mL
Conjugation	Unconjugated
Purification	The antibody was affinity-purified from rabbit anti-serum by affinity-chromatography.
Dilution	IF 1:50-200
Range	WB 1:500-1:2000 IHC 1:100-1:300 IP 2-5 ug/mg ELISA 1:10000
Formulation	PBS, 50% Glycerol, 0.5% BSA and 0.02% Sodium Azide.
Isotype	IgG
Storage Instruction	Store at -20°C for up to 1 year from the date of receipt, and avoid repeat freeze-thaw cycles.

TARGET INFORMATION

Gene ID	6772
Gene Symbol	STAT1
Uniprot ID	STAT1_HUMAN
Immunogen	The antiserum was produced against synthesized peptide derived from human STAT1 around the phosphorylation site of Tyr701 at amino acid range 668-717
Immunogen Region	640-720
Specificity	Phospho-STAT1-Tyr701 polyclonal antibody (Signal Transducer And Activator Of Transcription 1-Alpha/Beta) binds to endogenous Signal Transducer And Activator Of Transcription 1-Alpha/Beta at the amino acid region 640-720 only when phosphorylated at Ty
Immunogen Sequence	



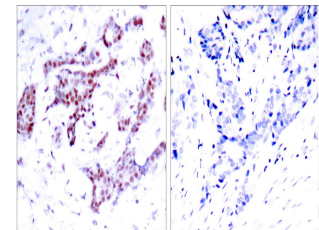
Western blot analysis of lysates from COS7 cells, using STAT1 (Phospho-Tyr701) Antibody. The lane on the right is blocked with the phospho peptide.



Western blot analysis of lysates from 1) MOUSE-BRAIN, 2) SY-SY5X, 3) COS7 cells, (Green) primary antibody was diluted at 1:1000, 4°C over night, secondary antibody (cat: NA) was diluted at 1:10000, 37°C 1hour, (Red) Actin Beta monoclonal antibody (5B7) (cat: STJ96930) antibody was diluted at 1:5000 as loading control, 4°C over night, secondary antibody (cat: NA) was diluted at 1:10000, 37°C 1hour.



Western blot analysis of COS7 cells using Phospho-Stat1 (Y701) Polyclonal Antibody diluted at 1: 1000



Immunohistochemistry analysis of paraffin-embedded human breast carcinoma, using STAT1 (Phospho-Tyr701) Antibody. The picture on the right is blocked with the phospho peptide.