

Anti-Phospho-SP1-Thr739 antibody (680-760) (STJ90408)

STJ90408

GENERAL INFORMATION

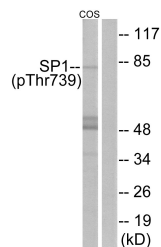
Product Type	Primary antibodies
Short Description	Rabbit polyclonal antibody anti-Phospho-Transcription Factor Sp1-Thr739 (680-760) is suitable for use in Western Blot, Immunohistochemistry, Immunofluorescence and ELISA research applications.
Applications	WB, IHC-P, IF-P, ELISA
Host/Source	Rabbit
Reactivity	Human, Mouse, Rat, Monkey

PRODUCT PROPERTIES

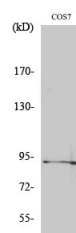
Clonality	Polyclonal
Clone ID	
Concentration	1 mg/mL
Conjugation	Unconjugated
Purification	The antibody was affinity-purified from rabbit anti-serum by affinity-chromatography.
Dilution Range	WB 1:500-1:2000 IHC 1:100-1:300 ELISA 1:5000
Formulation	PBS, 50% Glycerol, 0.5% BSA and 0.02% Sodium Azide.
Isotype	IgG
Storage Instruction	Store at -20°C for up to 1 year from the date of receipt, and avoid repeat freeze-thaw cycles.

TARGET INFORMATION

Gene ID	6667
Gene Symbol	SP1
Uniprot ID	SP1_HUMAN
Immunogen	The antiserum was produced against synthesized peptide derived from human SP1 around the phosphorylation site of Thr739 at amino acid range 706-755
Immunogen Region	680-760
Specificity	Phospho-SP1-Thr739 polyclonal antibody (Transcription Factor Sp1) binds to endogenous Transcription Factor Sp1 at the amino acid region 680-760 only when phosphorylated at Thr739.
Immunogen Sequence	



Western blot analysis of lysates from COS7 cells treated with serum 20% 15', using SP1 (Phospho-Thr739) Antibody. The lane on the right is blocked with the phospho peptide.



Western blot analysis of various cells using Phospho-Sp1 (T739) Polyclonal Antibody diluted at 1:1000

This product is suitable for in-vitro studies under the RESEARCH USE ONLY [RUO] licence. This product must not be used as for diagnostic or other medical purposes.
St John's Laboratory Ltd, Knowledge Dock Business Centre, University Way, London, E16 2RD | Tel: 0208 223 3081