

Anti-Phospho-SMC1A-Ser957 antibody (900-980) (STJ90406)

STJ90406

GENERAL INFORMATION

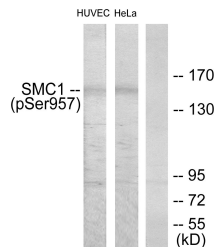
Product Type	Primary antibodies
Short Description	Rabbit polyclonal antibody anti-Phospho-Structural Maintenance Of Chromosomes Protein 1a-Ser957 (900-980) is suitable for use in Western Blot, Immunohistochemistry, Immunofluorescence and ELISA research applications.
Applications	WB, IHC-P, IF-P, ELISA
Host/Source	Rabbit
Reactivity	Human, Mouse

PRODUCT PROPERTIES

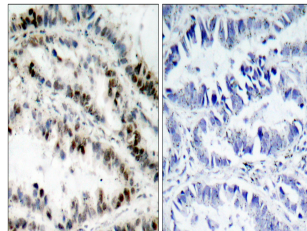
Clonality	Polyclonal
Clone ID	
Concentration	1 mg/mL
Conjugation	Unconjugated
Purification	The antibody was affinity-purified from rabbit anti-serum by affinity-chromatography.
Dilution Range	WB 1:500-1:2000 IHC 1:100-1:300 ELISA 1:10000
Formulation	PBS, 50% Glycerol, 0.5% BSA and 0.02% Sodium Azide.
Isotype	IgG
Storage Instruction	Store at -20°C for up to 1 year from the date of receipt, and avoid repeat freeze-thaw cycles.

TARGET INFORMATION

Gene ID	8243
Gene Symbol	SMC1A
Uniprot ID	SMC1A_HUMAN
Immunogen	The antiserum was produced against synthesized peptide derived from human SMC1 around the phosphorylation site of Ser957 at amino acid range 931-980
Immunogen Region	900-980
Specificity	Phospho-SMC1A-Ser957 polyclonal antibody (Structural Maintenance Of Chromosomes Protein 1a) binds to endogenous Structural Maintenance Of Chromosomes Protein 1a at the amino acid region 900-980 only when phosphorylated at Ser957.
Immunogen Sequence	



Western blot analysis of lysates from HUVEC cells treated with EGF 200ng/ml 5'/HeLa cells treated with EGF 200ng/ml 15', using SMC1 (Phospho-Ser957) Antibody. The lane on the right is blocked with the phospho peptide.



Immunohistochemistry analysis of paraffin-embedded human lung carcinoma, using SMC1 (Phospho-Ser957) Antibody. The picture on the right is blocked with the phospho peptide.

This product is suitable for in-vitro studies under the RESEARCH USE ONLY [RUO] licence. This product must not be used as for diagnostic or other medical purposes.
St John's Laboratory Ltd, Knowledge Dock Business Centre, University Way, London, E16 2RD | Tel: 0208 223 3081