

Anti-Phospho-SHB-Tyr246 antibody (STJ90405)

STJ90405

GENERAL INFORMATION

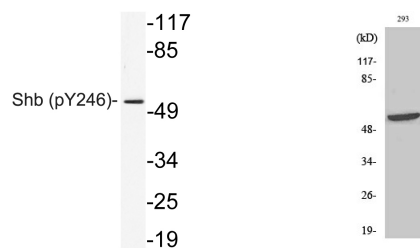
Product Type	Primary antibodies
Short Description	Rabbit polyclonal antibody anti-Phospho-Sh2 Domain-Containing Adapter Protein B-Tyr246 is suitable for use in Western Blot and ELISA research applications.
Applications	WB, ELISA
Host/Source	Rabbit
Reactivity	Human, Mouse

PRODUCT PROPERTIES

Clonality	Polyclonal
Clone ID	
Concentration	1 mg/mL
Conjugation	Unconjugated
Purification	The antibody was affinity-purified from rabbit anti-serum by affinity-chromatography.
Dilution Range	WB 1:500-1:2000 ELISA 1:10000
Formulation	PBS, 50% Glycerol, 0.5% BSA and 0.02% Sodium Azide.
Isotype	IgG
Storage Instruction	Store at -20°C for up to 1 year from the date of receipt, and avoid repeat freeze-thaw cycles.

TARGET INFORMATION

Gene ID	6461
Gene Symbol	SHB
Uniprot ID	SHB_HUMAN
Immunogen	Synthesized phospho-peptide around the phosphorylation site of human Shb (phospho Tyr246)
Immunogen Region	
Specificity	Phospho-SHB-Tyr246 polyclonal antibody (Sh2 Domain-Containing Adapter Protein B) binds to endogenous Sh2 Domain-Containing Adapter Protein B only when phosphorylated at Tyr246.
Immunogen Sequence	



Western blot analysis of lysate from 293 cells, using phospho-Serb (Phospho-Tyr246) antibody.

Western blot analysis of various cells using Phospho-Shb (Y246) Polyclonal Antibody

This product is suitable for in-vitro studies under the RESEARCH USE ONLY [RUO] licence. This product must not be used as for diagnostic or other medical purposes.
St John's Laboratory Ltd, Knowledge Dock Business Centre, University Way, London, E16 2RD | Tel: 0208 223 3081