

Anti-Phospho-RPS6-Ser235 antibody (170-250) (STJ90403)

STJ90403

GENERAL INFORMATION

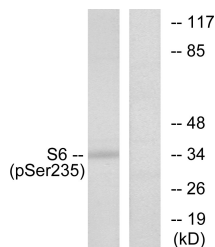
Product Type	Primary antibodies
Short Description	Rabbit polyclonal antibody anti-Phospho-40s Ribosomal Protein S6-Ser235 (170-250) is suitable for use in Western Blot, Immunofluorescence, Immunocytochemistry and ELISA research applications.
Applications	WB, IF, ICC, ELISA
Host/Source	Rabbit
Reactivity	Human, Mouse, Rat

PRODUCT PROPERTIES

Clonality	Polyclonal
Clone ID	
Concentration	1 mg/mL
Conjugation	Unconjugated
Purification	The antibody was affinity-purified from rabbit anti-serum by affinity-chromatography.
Dilution Range	WB 1:500-1:2000 IF 1:200-1:1000 ELISA 1:20000
Formulation	PBS, 50% Glycerol, 0.5% BSA and 0.02% Sodium Azide.
Isotype	IgG
Storage Instruction	Store at 20°C for up to 1 year from the date of receipt, and avoid repeat freeze-thaw cycles.

TARGET INFORMATION

Gene ID	6194
Gene Symbol	RPS6
Uniprot ID	RS6_HUMAN
Immunogen	The antiserum was produced against synthesized peptide derived from human S6 Ribosomal Protein around the phosphorylation site of Ser235 at amino acid range 200-249
Immunogen Region	170-250
Specificity	Phospho-RPS6-Ser235 polyclonal antibody (40s Ribosomal Protein S6) binds to endogenous 40s Ribosomal Protein S6 at the amino acid region 170-250 only when phosphorylated at Ser235.
Immunogen Sequence	



Western blot analysis of lysates from 293 cells treated with serum 10% 15', using S6 Ribosomal Protein (Phospho-Ser235) Antibody. The lane on the right is blocked with the phospho peptide.

This product is suitable for in-vitro studies under the RESEARCH USE ONLY [RUO] licence. This product must not be used as for diagnostic or other medical purposes.
St John's Laboratory Ltd, Knowledge Dock Business Centre, University Way, London, E16 2RD | Tel: 0208 223 3081