

## Anti-Phospho-PTEN-Ser380 antibody (320-400) (STJ90398)

STJ90398

### GENERAL INFORMATION

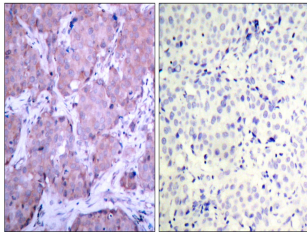
|                          |  |
|--------------------------|--|
| <b>Product Type</b>      | Primary antibodies   |
| <b>Short Description</b> | Rabbit polyclonal antibody anti-Phospho-Phosphatidylinositol 3-4-5-Trisphosphate 3-Phosphatase And Dual-Specificity Protein Phosphatase Pten-Ser380 (320-400) is suitable for use in Immunohistochemistry, Immunofluorescence and ELISA research applicati |
| <b>Applications</b>      | IHC-P, IF-P, ELISA   |
| <b>Host/Source</b>       | Rabbit   |
| <b>Reactivity</b>        | Human, Mouse, Rat  |

### PRODUCT PROPERTIES

|                      |   |
|----------------------|---|
| <b>Clonality</b>     | Polyclonal  |
| <b>Clone ID</b>      |   |
| <b>Concentration</b> | 1 mg/mL   |
| <b>Conjugation</b>   | Unconjugated  |
| <b>Purification</b>  | The antibody was affinity-purified from rabbit anti-serum by affinity-chromatography.         |
| <b>Dilution</b>      | IHC 1:100-1:300   |
| <b>Range</b>         | ELISA 1:10000   |
| <b>Formulation</b>   | PBS, 50% Glycerol, 0.5% BSA and 0.02% Sodium Azide.   |
| <b>Isotype</b>       | IgG   |
| <b>Storage</b>       | Store at-20°C for up to 1 year from the date of receipt, and avoid repeat freeze-thaw cycles. |
| <b>Instruction</b>   |   |

### TARGET INFORMATION

|                           |  |
|---------------------------|--|
| <b>Gene ID</b>            | 5728   |
| <b>Gene Symbol</b>        | PTEN   |
| <b>Uniprot ID</b>         | PTEN_HUMAN   |
| <b>Immunogen</b>          | The antiserum was produced against synthesized peptide derived from human PTEN around the phosphorylation site of Ser380. amino acid range:366-395   |
| <b>Immunogen Region</b>   | 320-400  |
| <b>Specificity</b>        | Phospho-PTEN-Ser380 polyclonal antibody (Phosphatidylinositol 3-4-5-Trisphosphate 3-Phosphatase And Dual-Specificity Protein Phosphatase Pten) binds to endogenous Phosphatidylinositol 3-4-5-Trisphosphate 3-Phosphatase And Dual-Specificity Protein Pho |
| <b>Immunogen Sequence</b> |  |



Immunohistochemistry analysis of paraffin-embedded human breast cancer, using PTEN (Phospho-Ser380) Antibody. The picture on the right is blocked with the PTEN (Phospho-Ser380) peptide.