

## Anti-Phospho-PLCG1-Tyr783 antibody (720-800) (STJ90394)

STJ90394

### GENERAL INFORMATION

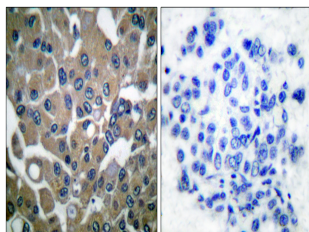
<b>Product Type</b>	Primary antibodies
<b>Short Description</b>	Rabbit polyclonal antibody anti-Phospho-1-Phosphatidylinositol 4-5-Bisphosphate Phosphodiesterase Gamma-1-Tyr783 (720-800) is suitable for use in Western Blot, Immunohistochemistry, Immunofluorescence and ELISA research applications.
<b>Applications</b>	WB, IHC-P, IF-P, ELISA
<b>Host/Source</b>	Rabbit
<b>Reactivity</b>	Human, Mouse, Rat, Monkey

### PRODUCT PROPERTIES

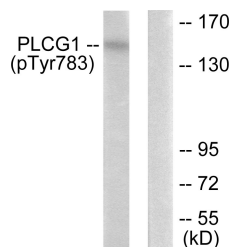
<b>Clonality</b>	Polyclonal
<b>Clone ID</b>	
<b>Concentration</b>	1 mg/mL
<b>Conjugation</b>	Unconjugated
<b>Purification</b>	The antibody was affinity-purified from rabbit anti-serum by affinity-chromatography.
<b>Dilution Range</b>	WB 1:500-1:2000 IHC 1:100-1:300 ELISA 1:10000
<b>Formulation</b>	PBS, 50% Glycerol, 0.5% BSA and 0.02% Sodium Azide.
<b>Isotype</b>	IgG
<b>Storage Instruction</b>	Store at -20°C for up to 1 year from the date of receipt, and avoid repeat freeze-thaw cycles.

### TARGET INFORMATION

<b>Gene ID</b>	5335
<b>Gene Symbol</b>	PLCG1
<b>Uniprot ID</b>	PLCG1_HUMAN
<b>Immunogen</b>	The antiserum was produced against synthesized peptide derived from human PLCG1 around the phosphorylation site of Tyr783 at amino acid range 751-800
<b>Immunogen Region</b>	720-800
<b>Specificity</b>	Phospho-PLCG1-Tyr783 polyclonal antibody (1-Phosphatidylinositol 4-5-Bisphosphate Phosphodiesterase Gamma-1) binds to endogenous 1-Phosphatidylinositol 4-5-Bisphosphate Phosphodiesterase Gamma-1 at the amino acid region 720-800 only when phosphorylat
<b>Immunogen Sequence</b>	



Immunohistochemistry analysis of paraffin-embedded human breast carcinoma, using PLCG1 (Phospho-Tyr783) Antibody. The picture on the right is blocked with the phospho peptide.



Western blot analysis of lysates from COS7 cells treated with EGF 200ng/ml 30', using PLCG1 (Phospho-Tyr783) Antibody. The lane on the right is blocked with the phospho peptide.



Western blot analysis of various cells using Phospho-PLC Gamma 1 (Tyr783) Polyclonal Antibody