

## Anti-Phospho-PRKCZ-Thr560 antibody (500-580) (STJ90390)

STJ90390

### GENERAL INFORMATION

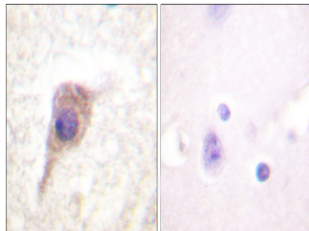
<b>Product Type</b>	Primary antibodies
<b>Short Description</b>	Rabbit polyclonal antibody anti-Phospho-Protein Kinase C Zeta Type-Thr560 (500-580) is suitable for use in Western Blot, Immunohistochemistry, Immunofluorescence and ELISA research applications.
<b>Applications</b>	WB, IHC-P, IF-P, ELISA
<b>Host/Source</b>	Rabbit
<b>Reactivity</b>	Human, Mouse, Rat, Monkey

### PRODUCT PROPERTIES

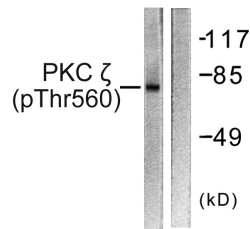
<b>Clonality</b>	Polyclonal
<b>Clone ID</b>	
<b>Concentration</b>	1 mg/mL
<b>Conjugation</b>	Unconjugated
<b>Purification</b>	The antibody was affinity-purified from rabbit anti-serum by affinity-chromatography.
<b>Dilution Range</b>	WB 1:500-1:2000 IHC 1:100-1:300 ELISA 1:20000
<b>Formulation</b>	PBS, 50% Glycerol, 0.5% BSA and 0.02% Sodium Azide.
<b>Isotype</b>	IgG
<b>Storage Instruction</b>	Store at -20°C for up to 1 year from the date of receipt, and avoid repeat freeze-thaw cycles.

### TARGET INFORMATION

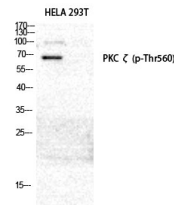
<b>Gene ID</b>	5590
<b>Gene Symbol</b>	PRKCZ
<b>Uniprot ID</b>	KPCZ_HUMAN
<b>Immunogen</b>	The antiserum was produced against synthesized peptide derived from human PKC zeta around the phosphorylation site of Thr560 at amino acid range 526-575
<b>Immunogen Region</b>	500-580
<b>Specificity</b>	Phospho-PRKCZ-Thr560 polyclonal antibody (Protein Kinase C Zeta Type) binds to endogenous Protein Kinase C Zeta Type at the amino acid region 500-580 only when phosphorylated at Thr560.
<b>Immunogen Sequence</b>	



Immunohistochemistry analysis of paraffin-embedded human brain, using PKC zeta (Phospho-Thr560) Antibody. The picture on the right is blocked with the phospho peptide.



Western blot analysis of lysates from COST cells treated with PMA 125ng/ml 30', using PKC zeta (Phospho-Thr560) Antibody. The lane on the right is blocked with the phospho peptide.



Western blot analysis of HELA 293T cells using Phospho-PKC Zeta (T560) Polyclonal Antibody diluted at 1:2000

This product is suitable for in-vitro studies under the RESEARCH USE ONLY [RUO] licence. This product must not be used as for diagnostic or other medical purposes.  
St John's Laboratory Ltd, Knowledge Dock Business Centre, University Way, London, E16 2RD | Tel: 0208 223 3081