

Anti-Phospho-PRKCZ-Thr410 antibody (350-430) (STJ90389)

STJ90389

GENERAL INFORMATION

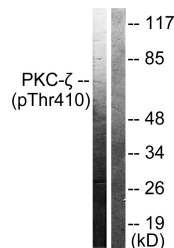
| | |
|--------------------------|---|
| Product Type | Primary antibodies |
| Short Description | Rabbit polyclonal antibody anti-Phospho-Protein Kinase C Zeta Type-Thr410 (350-430) is suitable for use in Western Blot, Immunohistochemistry, Immunofluorescence, Immunocytochemistry and ELISA research applications. |
| Applications | WB, IHC-P, IF, ICC, ELISA |
| Host/Source | Rabbit |
| Reactivity | Human, Mouse, Rat |

PRODUCT PROPERTIES

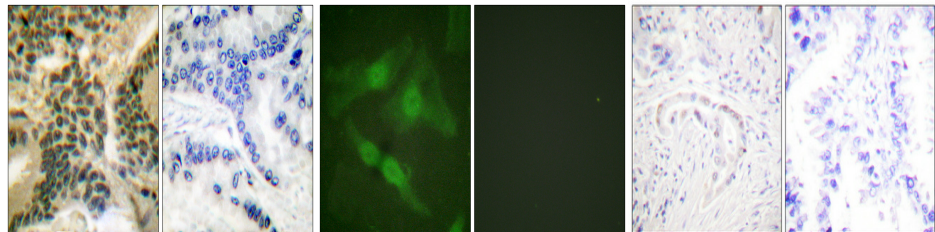
| | |
|----------------------------|--|
| Clonality | Polyclonal |
| Clone ID | |
| Concentration | 1 mg/mL |
| Conjugation | Unconjugated |
| Purification | The antibody was affinity-purified from rabbit anti-serum by affinity-chromatography. |
| Dilution | WB 1:500-1:2000 |
| Range | IHC 1:100-1:300 IF 1:200-1:1000 ELISA 1:20000 |
| Formulation | PBS, 50% Glycerol, 0.5% BSA and 0.02% Sodium Azide. |
| Isotype | IgG |
| Storage Instruction | Store at -20°C for up to 1 year from the date of receipt, and avoid repeat freeze-thaw cycles. |

TARGET INFORMATION

| | |
|---------------------------|---|
| Gene ID | 5590 |
| Gene Symbol | PRKCZ |
| Uniprot ID | KPCZ_HUMAN |
| Immunogen | The antiserum was produced against synthesized peptide derived from human PKC zeta around the phosphorylation site of Thr410 at amino acid range 376-425 |
| Immunogen Region | 350-430 |
| Specificity | Phospho-PRKCZ-Thr410 polyclonal antibody (Protein Kinase C Zeta Type) binds to endogenous Protein Kinase C Zeta Type at the amino acid region 350-430 only when phosphorylated at Thr410. |
| Immunogen Sequence | |



Western blot analysis of lysates from NIH/3T3 cells treated with PMA (25ng/ml 30'), using PKC zeta (Phospho-Thr410) Antibody. The lane on the right is blocked with the phospho peptide.



Immunohistochemistry analysis of paraffin-embedded human lung carcinoma, using PKC zeta (Phospho-Thr410) Antibody. The picture on the right is blocked with the phospho peptide.

Immunofluorescence analysis of HeLa cells, using PKC zeta (Phospho-Thr410) Antibody. The picture on the right is blocked with the phospho peptide.

Immunohistochemical analysis of paraffin-embedded Human lung cancer. Antibody was diluted at 1:100 (4°C overnight). High-pressure and temperature Tris-EDTA, pH8.0 was used for antigen retrieval. Negative control (right) obtained from antibody was pre-absorbed by immunogen peptide.

This product is suitable for in-vitro studies under the RESEARCH USE ONLY [RUO] licence. This product must not be used as for diagnostic or other medical purposes.
St John's Laboratory Ltd, Knowledge Dock Business Centre, University Way, London, E16 2RD | Tel: 0208 223 3081