

Anti-Phospho-PKC-Thr497 antibody (600-680) (STJ90387)

STJ90387

GENERAL INFORMATION

Product Type	Primary antibodies
Short Description	Rabbit polyclonal antibody anti-Phospho-Protein kinase C alpha type and Protein kinase C beta type and Protein kinase C delta type and Protein kinase C epsilon type and Protein kinase C gamma type and Protein kinase C eta type and Protein kinase C th
Applications	WB, IHC-P, IF, ICC, ELISA
Host/Source	Rabbit
Reactivity	Human, Mouse, Rat

PRODUCT PROPERTIES

Clonality	Polyclonal
Clone ID	
Concentration	1 mg/mL
Conjugation	Unconjugated
Purification	The antibody was affinity-purified from rabbit anti-serum by affinity-chromatography.
Dilution	WB 1:500-1:2000
Range	IHC 1:100-1:300 IF 1:200-1:1000 ELISA 1:40000
Formulation	PBS, 50% Glycerol, 0.5% BSA and 0.02% Sodium Azide.
Isotype	IgG
Storage Instruction	Store at -20°C for up to 1 year from the date of receipt, and avoid repeat freeze-thaw cycles.

TARGET INFORMATION

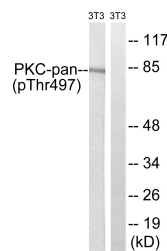
Gene ID [5579](#)
[5578](#)
[5581](#)
[PRKCB](#)
[PRKCA](#)
[KPCB_HUMAN](#)
[KPCA_HUMAN](#)
[KPCE_HUMAN](#)
[<](#)

Immunogen The antiserum was produced against synthesized peptide derived from human PKC-pan around the phosphorylation site of Thr497 at amino acid range 623-672

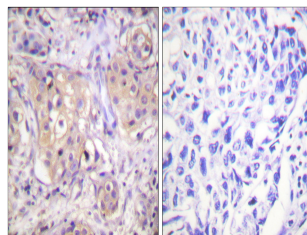
Immunogen Region 600-680

Specificity Phospho-PKC-Thr497 polyclonal antibody (Protein kinase C alpha type and Protein kinase C beta type and Protein kinase C delta type and Protein kinase C epsilon type and Protein kinase C gamma type and Protein kinase C eta type and Protein kinase C th

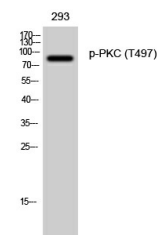
Immunogen Sequence



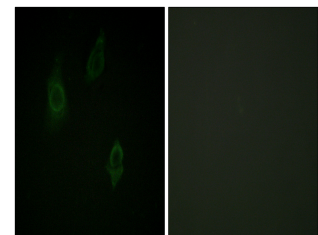
Western blot analysis of lysates from NIH/3T3 cells treated with PMA 250ng/ml 15', using PKC-pan (Phospho-Thr497) Antibody. The lane on the right is blocked with the phospho peptide.



Immunohistochemistry analysis of paraffin-embedded human breast carcinoma, using PKC-pan (Phospho-Thr497) Antibody. The picture on the right is blocked with the phospho peptide.



Western blot analysis of 293 cells using Phospho-PKC (T497) Polyclonal Antibody diluted at 1: 500



Immunofluorescence analysis of HepG2 cells, using PKC-pan (Phospho-Thr497) Antibody. The picture on the right is blocked with the phospho peptide.

This product is suitable for in-vitro studies under the RESEARCH USE ONLY [RUO] licence. This product must not be used as for diagnostic or other medical purposes.
 St John's Laboratory Ltd, Knowledge Dock Business Centre, University Way, London, E16 2RD | Tel: 0208 223 3081