

## Anti-Phospho-PKA Alpha/Beta/Gamma-Thr198 antibody (140-220) (STJ90386)

STJ90386

### GENERAL INFORMATION

<b>Product Type</b>	Primary antibodies
<b>Short Description</b>	Rabbit polyclonal antibody anti-Phospho-cAMP-dependent protein kinase catalytic subunit alpha and cAMP-dependent protein kinase catalytic subunit beta and cAMP-dependent protein kinase catalytic subunit gamma-Thr198 (140-220) is suitable for use in W
<b>Applications</b>	WB, IHC-P, IF, ICC, ELISA
<b>Host/Source</b>	Rabbit
<b>Reactivity</b>	Human, Mouse, Rat

### PRODUCT PROPERTIES

<b>Clonality</b>	Polyclonal
<b>Clone ID</b>	
<b>Concentration</b>	1 mg/mL
<b>Conjugation</b>	Unconjugated
<b>Purification</b>	The antibody was affinity-purified from rabbit anti-serum by affinity-chromatography.
<b>Dilution</b>	WB 1:500-1:2000
<b>Range</b>	IHC 1:100-1:300 IF 1:200-1:1000 ELISA 1:10000
<b>Formulation</b>	PBS, 50% Glycerol, 0.5% BSA and 0.02% Sodium Azide.
<b>Isotype</b>	IgG
<b>Storage Instruction</b>	Store at -20°C for up to 1 year from the date of receipt, and avoid repeat freeze-thaw cycles.

### TARGET INFORMATION

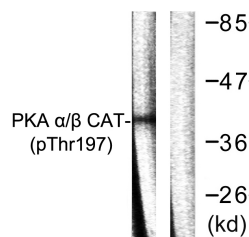
**Gene ID** [5566](#)  
[5568](#)  
[5567](#)  
[PRKACA](#)  
[PRKACG](#)  
[KAPCA\\_HUMAN](#)  
[KAPCG\\_HUMAN](#)  
[KAPCB\\_HUMAN](#)

**Immunogen** The antiserum was produced against synthesized peptide derived from human PKA CAT around the phosphorylation site of Thr197 at amino acid range 166-215

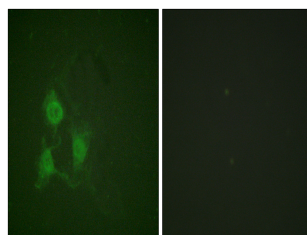
**Immunogen Region** 140-220

**Specificity** Phospho-PKA Alpha/Beta/Gamma-Thr198 polyclonal antibody (cAMP-dependent protein kinase catalytic subunit alpha and cAMP-dependent protein kinase catalytic subunit beta and cAMP-dependent protein kinase catalytic subunit gamma) binds to endogenous cAM

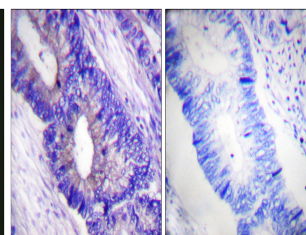
**Immunogen Sequence**



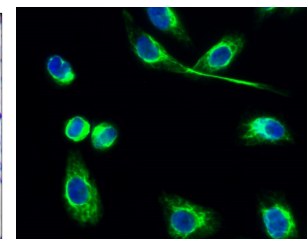
Western blot analysis of lysates from mouse brain, using PKA CAT (Phospho-Thr197) Antibody. The lane on the right is blocked with the phospho peptide.



Immunofluorescence analysis of A549 cells, using PKA CAT (Phospho-Thr197) Antibody. The picture on the right is blocked with the phospho peptide.



Immunohistochemistry analysis of paraffin-embedded human colon carcinoma, using PKA CAT (Phospho-Thr197) Antibody. The picture on the right is blocked with the phospho peptide.



Immunofluorescence analysis of HeLa cell. 1. PKA Alpha/Beta/Gamma cat (phospho Thr198) Polyclonal Antibody (green) was diluted at 1:200 (4°C overnight). 2. Goat Anti Rabbit Alexa Fluor 488 Catalog: (NA) was diluted at 1:1000 (room temperature, 50min). 3. DAPI (blue) 10min.

This product is suitable for in-vitro studies under the RESEARCH USE ONLY [RUO] licence. This product must not be used as for diagnostic or other medical purposes.  
 St John's Laboratory Ltd, Knowledge Dock Business Centre, University Way, London, E16 2RD | Tel: 0208 223 3081