

## Anti-Phospho-PDPK1-Ser241 antibody (180-260) (STJ90382)

STJ90382

### GENERAL INFORMATION

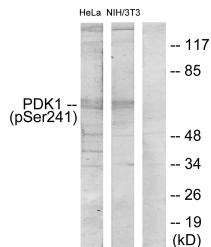
|                          |   |
|--------------------------|---|
| <b>Product Type</b>      | Primary antibodies  |
| <b>Short Description</b> | Rabbit polyclonal antibody anti-Phospho-3-Phosphoinositide-Dependent Protein Kinase 1-Ser241 (180-260) is suitable for use in Western Blot, Immunohistochemistry, Immunofluorescence and ELISA research applications. |
| <b>Applications</b>      | WB, IHC-P, IF-P, ELISA  |
| <b>Host/Source</b>       | Rabbit  |
| <b>Reactivity</b>        | Human, Mouse, Rat   |

### PRODUCT PROPERTIES

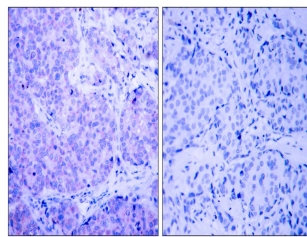
|                            |   |
|----------------------------|---|
| <b>Clonality</b>           | Polyclonal  |
| <b>Clone ID</b>            |   |
| <b>Concentration</b>       | 1 mg/mL   |
| <b>Conjugation</b>         | Unconjugated  |
| <b>Purification</b>        | The antibody was affinity-purified from rabbit anti-serum by affinity-chromatography.         |
| <b>Dilution Range</b>      | WB 1:500-1:2000<br>IHC 1:100-1:300<br>ELISA 1:20000   |
| <b>Formulation</b>         | PBS, 50% Glycerol, 0.5% BSA and 0.02% Sodium Azide.   |
| <b>Isotype</b>             | IgG   |
| <b>Storage Instruction</b> | Store at 20°C for up to 1 year from the date of receipt, and avoid repeat freeze-thaw cycles. |

### TARGET INFORMATION

|                           |   |
|---------------------------|---|
| <b>Gene ID</b>            | 5170  |
| <b>Gene Symbol</b>        | PDPK1   |
| <b>Uniprot ID</b>         | PDPK1_HUMAN   |
| <b>Immunogen</b>          | The antiserum was produced against synthesized peptide derived from human PDK1 around the phosphorylation site of Ser241 at amino acid range 210-259  |
| <b>Immunogen Region</b>   | 180-260   |
| <b>Specificity</b>        | Phospho-PDPK1-Ser241 polyclonal antibody (3-Phosphoinositide-Dependent Protein Kinase 1) binds to endogenous 3-Phosphoinositide-Dependent Protein Kinase 1 at the amino acid region 180-260 only when phosphorylated at Ser241. |
| <b>Immunogen Sequence</b> |   |



Western blot analysis of lysates from HeLa cells and NIH/3T3 cells, using PDK1 (Phospho-Ser241) Antibody. The lane on the right is blocked with the phospho-peptide.



Immunohistochemistry analysis of paraffin-embedded human breast carcinoma, using PDK1 (Phospho-Ser241) Antibody. The picture on the right is blocked with the phospho-peptide.

This product is suitable for in-vitro studies under the RESEARCH USE ONLY [RUO] licence. This product must not be used as for diagnostic or other medical purposes.  
St John's Laboratory Ltd, Knowledge Dock Business Centre, University Way, London, E16 2RD | Tel: 0208 223 3081