

Anti-Phospho-PXN-Tyr88 antibody (STJ90381)

STJ90381

GENERAL INFORMATION

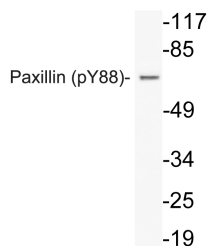
Product Type	Primary antibodies
Short Description	Rabbit polyclonal antibody anti-Phospho-Paxillin-Tyr88 is suitable for use in Western Blot, Immunohistochemistry, Immunofluorescence and ELISA research applications.
Applications	WB, IHC-P, IF-P, ELISA
Host/Source	Rabbit
Reactivity	Human, Rat, Mouse

PRODUCT PROPERTIES

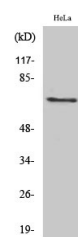
Clonality	Polyclonal
Clone ID	
Concentration	1 mg/mL
Conjugation	Unconjugated
Purification	The antibody was affinity-purified from rabbit anti-serum by affinity-chromatography.
Dilution Range	WB 1:500-1:2000 IHC 1:100-1:300 ELISA 1:10000
Formulation	PBS, 50% Glycerol, 0.5% BSA and 0.02% Sodium Azide.
Isotype	IgG
Storage Instruction	Store at -20°C for up to 1 year from the date of receipt, and avoid repeat freeze-thaw cycles.

TARGET INFORMATION

Gene ID	5829
Gene Symbol	PXN
Uniprot ID	PAXI_HUMAN
Immunogen	Synthesized phospho-peptide around the phosphorylation site of human Paxillin (phospho Tyr88)
Immunogen Region	
Specificity	Phospho-PXN-Tyr88 polyclonal antibody (Paxillin) binds to endogenous Paxillin only when phosphorylated at Tyr88.
Immunogen Sequence	



Western blot analysis of lysate from HeLa cells using phospho-Paxillin (Phospho-Tyr88) antibody.



Western blot analysis of various cells using Phospho-Paxillin (Y88) Polyclonal Antibody

This product is suitable for in-vitro studies under the RESEARCH USE ONLY [RUO] licence. This product must not be used as for diagnostic or other medical purposes.
St John's Laboratory Ltd, Knowledge Dock Business Centre, University Way, London, E16 2RD | Tel: 0208 223 3081