

## Anti-Phospho-TP73-Tyr99 antibody (40-120) (STJ90378)

STJ90378

### GENERAL INFORMATION

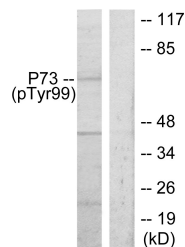
<b>Product Type</b>	Primary antibodies
<b>Short Description</b>	Rabbit polyclonal antibody anti-Phospho-Tumor Protein P73-Tyr99 (40-120) is suitable for use in Western Blot, Immunohistochemistry, Immunofluorescence and ELISA research applications.
<b>Applications</b>	WB, IHC-P, IF-P, ELISA
<b>Host/Source</b>	Rabbit
<b>Reactivity</b>	Human, Mouse

### PRODUCT PROPERTIES

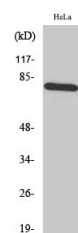
<b>Clonality</b>	Polyclonal
<b>Clone ID</b>	
<b>Concentration</b>	1 mg/mL
<b>Conjugation</b>	Unconjugated
<b>Purification</b>	The antibody was affinity-purified from rabbit anti-serum by affinity-chromatography.
<b>Dilution Range</b>	WB 1:500-1:2000 IHC 1:100-1:300 ELISA 1:10000
<b>Formulation</b>	PBS, 50% Glycerol, 0.5% BSA and 0.02% Sodium Azide.
<b>Isotype</b>	IgG
<b>Storage Instruction</b>	Store at -20°C for up to 1 year from the date of receipt, and avoid repeat freeze-thaw cycles.

### TARGET INFORMATION

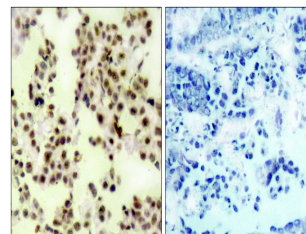
<b>Gene ID</b>	7161
<b>Gene Symbol</b>	TP73
<b>Uniprot ID</b>	P73_HUMAN
<b>Immunogen</b>	The antiserum was produced against synthesized peptide derived from human p73 around the phosphorylation site of Tyr99 at amino acid range 66-115
<b>Immunogen Region</b>	40-120
<b>Specificity</b>	Phospho-TP73-Tyr99 polyclonal antibody (Tumor Protein P73) binds to endogenous Tumor Protein P73 at the amino acid region 40-120 only when phosphorylated at Tyr99.
<b>Immunogen Sequence</b>	



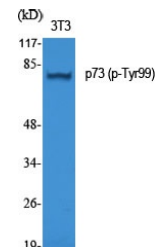
Western blot analysis of lysates from K562 cells treated with Pervanadate, using p73 (Phospho-Tyr99) Antibody. The lane on the right is blocked with the phospho peptide.



Western blot analysis of HeLa cells using Phospho-p73 (Y99) Polyclonal Antibody cells nucleus extracted by Minute TM Cytoplasmic and Nuclear Fractionation kit (SC-003, Inventibiotec, MN, USA).



Immunohistochemistry analysis of paraffin-embedded human lung carcinoma, using p73 (Phospho-Tyr99) Antibody. The picture on the right is blocked with the phospho peptide.



Western blot analysis of various cells using Phospho-p73 (Y99) Polyclonal Antibody cells nucleus extracted by Minute TM Cytoplasmic and Nuclear Fractionation kit (SC-003, Inventibiotec, MN, USA).

This product is suitable for in-vitro studies under the RESEARCH USE ONLY [RUO] licence. This product must not be used as for diagnostic or other medical purposes.  
St John's Laboratory Ltd, Knowledge Dock Business Centre, University Way, London, E16 2RD | Tel: 0208 223 3081