

Anti-Phospho-TP53-Ser33 antibody (10-90) (STJ90368)

STJ90368

GENERAL INFORMATION

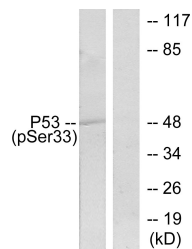
Product Type	Primary antibodies
Short Description	Rabbit polyclonal antibody anti-Phospho-Cellular Tumor antigen P53-Ser33 (10-90) is suitable for use in Western Blot and ELISA research applications.
Applications	WB, ELISA
Host/Source	Rabbit
Reactivity	Human, Rat, Mouse

PRODUCT PROPERTIES

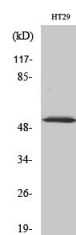
Clonality	Polyclonal
Clone ID	
Concentration	1 mg/mL
Conjugation	Unconjugated
Purification	The antibody was affinity-purified from rabbit anti-serum by affinity-chromatography.
Dilution Range	WB 1:500-1:2000 ELISA 1:20000
Formulation	PBS, 50% Glycerol, 0.5% BSA and 0.02% Sodium Azide.
Isotype	IgG
Storage Instruction	Store at -20°C for up to 1 year from the date of receipt, and avoid repeat freeze-thaw cycles.

TARGET INFORMATION

Gene ID	7157
Gene Symbol	TP53
Uniprot ID	P53_HUMAN
Immunogen	The antiserum was produced against synthesized peptide derived from human p53 around the phosphorylation site of Ser33 at amino acid range 1-50
Immunogen Region	10-90
Specificity	Phospho-TP53-Ser33 polyclonal antibody (Cellular Tumor Antigen P53) binds to endogenous Cellular Tumor Antigen P53 at the amino acid region 10-90 only when phosphorylated at Ser33.
Immunogen Sequence	



Western blot analysis of lysates from 293 cells treated with UV, using p53 (Phospho-Ser33) Antibody. The lane on the right is blocked with the phospho peptide.



Western blot analysis of various cells using Phospho-p53 (S33) Polyclonal Antibody diluted at 1: 2000.

This product is suitable for in-vitro studies under the RESEARCH USE ONLY [RUO] licence. This product must not be used as for diagnostic or other medical purposes.
St John's Laboratory Ltd, Knowledge Dock Business Centre, University Way, London, E16 2RD | Tel: 0208 223 3081