

## Anti-Phospho-TP53-Ser15 antibody (1-80) (STJ90365)

STJ90365

### GENERAL INFORMATION

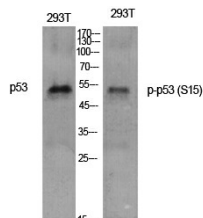
|                          |  |
|--------------------------|--|
| <b>Product Type</b>      | Primary antibodies   |
| <b>Short Description</b> | Rabbit polyclonal antibody anti-Phospho-Cellular Tumor antigen P53-Ser15 (1-80) is suitable for use in Western Blot, Immunohistochemistry, Immunoprecipitation, Immunofluorescence, Immunocytochemistry and ELISA research applications. |
| <b>Applications</b>      | WB, IHC-P, IP, IF, ICC, ELISA  |
| <b>Host/Source</b>       | Rabbit   |
| <b>Reactivity</b>        | Human, Rat   |

### PRODUCT PROPERTIES

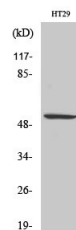
|                            |  |
|----------------------------|--|
| <b>Clonality</b>           | Polyclonal   |
| <b>Clone ID</b>            |  |
| <b>Concentration</b>       | 1 mg/mL  |
| <b>Conjugation</b>         | Unconjugated   |
| <b>Purification</b>        | The antibody was affinity-purified from rabbit anti-serum by affinity-chromatography.          |
| <b>Dilution Range</b>      | WB 1:500-1:2000<br>IHC 1:100-1:300<br>IP 2-5 ug/mg IF 1:200-1:1000<br>ELISA 1:10000            |
| <b>Formulation</b>         | PBS, 50% Glycerol, 0.5% BSA and 0.02% Sodium Azide.  |
| <b>Isotype</b>             | IgG  |
| <b>Storage Instruction</b> | Store at -20°C for up to 1 year from the date of receipt, and avoid repeat freeze-thaw cycles. |

### TARGET INFORMATION

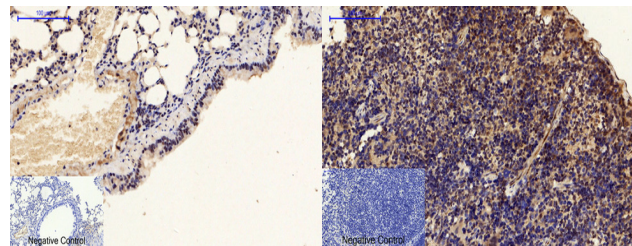
|                           |   |
|---------------------------|---|
| <b>Gene ID</b>            | 7157  |
| <b>Gene Symbol</b>        | TP53  |
| <b>Uniprot ID</b>         | P53_HUMAN   |
| <b>Immunogen</b>          | The antiserum was produced against synthesized peptide derived from human p53 around the phosphorylation site of Ser15 at amino acid range 1-50                                     |
| <b>Immunogen Region</b>   | 1-80  |
| <b>Specificity</b>        | Phospho-TP53-Ser15 polyclonal antibody (Cellular Tumor Antigen P53) binds to endogenous Cellular Tumor Antigen P53 at the amino acid region 1-80 only when phosphorylated at Ser15. |
| <b>Immunogen Sequence</b> |   |



Western blot analysis of various cells using Phospho-p53 (S15) Polyclonal Antibody diluted at 1: 1000



Western blot analysis of HT29 cells using Phospho-p53 (S15) Polyclonal Antibody diluted at 1: 1000



Immunohistochemical analysis of paraffin-embedded Mouse-lung tissue. 1, p53 (phospho Ser15) Polyclonal Antibody was diluted at 1:200 (4°C, overnight). 2, Sodium citrate pH 6.0 was used for antibody retrieval (>98°C, 20min). 3, Secondary antibody was diluted at 1:200 (room temperature, 30min). Negative control was used by secondary antibody only.

Immunohistochemical analysis of paraffin-embedded Mouse-spleen tissue. 1, p53 (phospho Ser15) Polyclonal Antibody was diluted at 1:200 (4°C, overnight). 2, Sodium citrate pH 6.0 was used for antibody retrieval (>98°C, 20min). 3, Secondary antibody was diluted at 1:200 (room temperature, 30min). Negative control was used by secondary antibody only.

This product is suitable for in-vitro studies under the RESEARCH USE ONLY [RUO] licence. This product must not be used as for diagnostic or other medical purposes.  
St John's Laboratory Ltd, Knowledge Dock Business Centre, University Way, London, E16 2RD | Tel: 0208 223 3081