

Anti-Phospho-MTOR-Ser2448 antibody (2390-2470) (STJ90336)

STJ90336

GENERAL INFORMATION

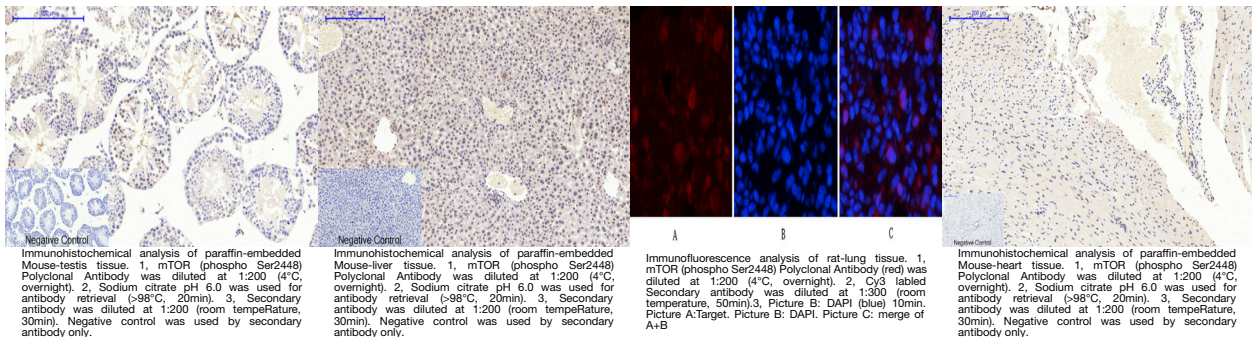
Product Type	Primary antibodies
Short Description	Rabbit polyclonal antibody anti-Phospho-Serine/Threonine-Protein Kinase Mtor-Ser2448 (2390-2470) is suitable for use in Western Blot, Immunohistochemistry, Immunofluorescence, Immunocytochemistry and ELISA research applications.
Applications	WB, IHC-P, IF, ICC, ELISA
Host/Source	Rabbit
Reactivity	Human, Mouse, Rat

PRODUCT PROPERTIES

Clonality	Polyclonal
Clone ID	
Concentration	1 mg/mL
Conjugation	Unconjugated
Purification	The antibody was affinity-purified from rabbit anti-serum by affinity-chromatography.
Dilution Range	WB 1:500-1:2000 IHC 1:100-1:300 IF 1:200-1:1000 ELISA 1:40000
Formulation	PBS, 50% Glycerol, 0.5% BSA and 0.02% Sodium Azide.
Isotype	IgG
Storage Instruction	Store at -20°C for up to 1 year from the date of receipt, and avoid repeat freeze-thaw cycles.

TARGET INFORMATION

Gene ID	2475
Gene Symbol	MTOR
Uniprot ID	MTOR_HUMAN
Immunogen	The antiserum was produced against synthesized peptide derived from human mTOR around the phosphorylation site of Ser2448 at amino acid range 2415-2464
Immunogen Region	2390-2470
Specificity	Phospho-MTOR-Ser2448 polyclonal antibody (Serine/Threonine-Protein Kinase Mtor) binds to endogenous Serine/Threonine-Protein Kinase Mtor at the amino acid region 2390-2470 only when phosphorylated at Ser2448.
Immunogen Sequence	



This product is suitable for in-vitro studies under the RESEARCH USE ONLY [RUO] licence. This product must not be used as for diagnostic or other medical purposes.
 St John's Laboratory Ltd, Knowledge Dock Business Centre, University Way, London, E16 2RD | Tel: 0208 223 3081