

Anti-Phospho-MET-Tyr1349 antibody (1290-1370) (STJ90335)

STJ90335

GENERAL INFORMATION

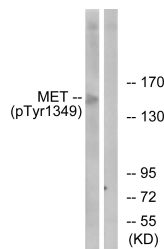
Product Type	Primary antibodies
Short Description	Rabbit polyclonal antibody anti-Phospho-Hepatocyte Growth Factor Receptor-Tyr1349 (1290-1370) is suitable for use in Western Blot and ELISA research applications.
Applications	WB, ELISA
Host/Source	Rabbit
Reactivity	Human, Mouse, Rat

PRODUCT PROPERTIES

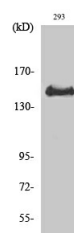
Clonality	Polyclonal
Clone ID	
Concentration	1 mg/mL
Conjugation	Unconjugated
Purification	The antibody was affinity-purified from rabbit anti-serum by affinity-chromatography.
Dilution	WB 1:500-1:2000
Range	ELISA 1:10000
Formulation	PBS, 50% Glycerol, 0.5% BSA and 0.02% Sodium Azide.
Isotype	IgG
Storage	Store at -20°C for up to 1 year from the date of receipt, and avoid repeat freeze-thaw cycles.
Instruction	

TARGET INFORMATION

Gene ID	4233
Gene Symbol	MET
Uniprot ID	MET_HUMAN
Immunogen	The antiserum was produced against synthesized peptide derived from human Met around the phosphorylation site of Tyr1349 at amino acid range 1316-1365
Immunogen Region	1290-1370
Specificity	Phospho-MET-Tyr1349 polyclonal antibody (Hepatocyte Growth Factor Receptor) binds to endogenous Hepatocyte Growth Factor Receptor at the amino acid region 1290-1370 only when phosphorylated at Tyr1349.
Immunogen Sequence	



Western blot analysis of lysates from HepG2 cells, using Met (Phospho-Tyr1349) Antibody. The lane on the right is blocked with the phospho peptide.



Western blot analysis of various cells using Phospho-Met (Y1349) Polyclonal Antibody diluted at 1: 1000

This product is suitable for in-vitro studies under the RESEARCH USE ONLY [RUO] licence. This product must not be used as for diagnostic or other medical purposes.
 St John's Laboratory Ltd, Knowledge Dock Business Centre, University Way, London, E16 2RD | Tel: 0208 223 3081