

Anti-Phospho-MAP2K2-Thr394 antibody (340-420) (STJ90329)

STJ90329

GENERAL INFORMATION

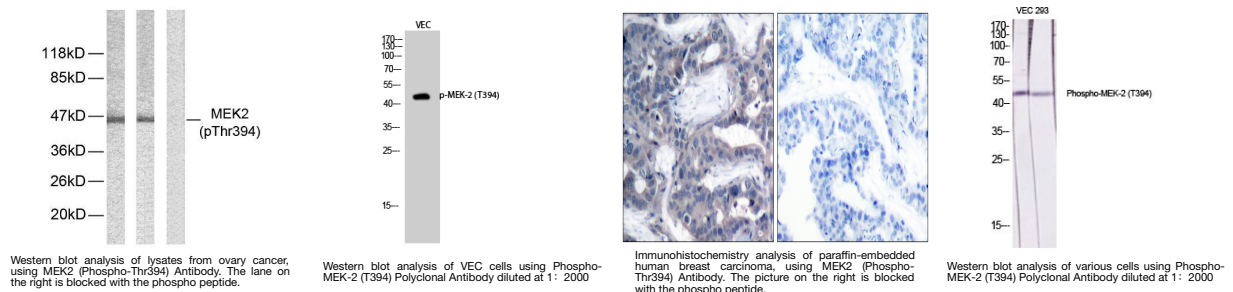
Product Type	Primary antibodies
Short Description	Rabbit polyclonal antibody anti-Phospho-Dual Specificity Mitogen-Activated Protein Kinase Kinase 2-Thr394 (340-420) is suitable for use in Western Blot, Immunohistochemistry, Immunofluorescence, Immunoprecipitation and ELISA research applications.
Applications	WB, IHC-P, IF-P, IP, ELISA
Host/Source	Rabbit
Reactivity	Human, Mouse, Rat

PRODUCT PROPERTIES

Clonality	Polyclonal
Clone ID	
Concentration	1 mg/mL
Conjugation	Unconjugated
Purification	The antibody was affinity-purified from rabbit anti-serum by affinity-chromatography.
Dilution	WB 1:500-1:2000
Range	IHC 1:100-1:300 IP 2-5 ug/mg ELISA 1:10000
Formulation	PBS, 50% Glycerol, 0.5% BSA and 0.02% Sodium Azide.
Isotype	IgG
Storage Instruction	Store at -20°C for up to 1 year from the date of receipt, and avoid repeat freeze-thaw cycles.

TARGET INFORMATION

Gene ID	5605
Gene Symbol	MAP2K2
Uniprot ID	MP2K2_HUMAN
Immunogen	The antiserum was produced against synthesized peptide derived from human MEK2 around the phosphorylation site of Thr394 at amino acid range 261-310
Immunogen Region	340-420
Specificity	Phospho-MAP2K2-Thr394 polyclonal antibody (Dual Specificity Mitogen-Activated Protein Kinase Kinase 2) binds to endogenous Dual Specificity Mitogen-Activated Protein Kinase Kinase 2 at the amino acid region 340-420 only when phosphorylated at Thr394.
Immunogen Sequence	



This product is suitable for in-vitro studies under the RESEARCH USE ONLY [RUO] licence. This product must not be used as for diagnostic or other medical purposes.
St John's Laboratory Ltd, Knowledge Dock Business Centre, University Way, London, E16 2RD | Tel: 0208 223 3081