

Anti-Phospho-LIMK2-Thr505 antibody (STJ90322)

STJ90322

GENERAL INFORMATION

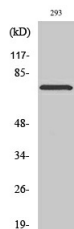
Product Type	Primary antibodies
Short Description	Rabbit polyclonal antibody anti-Phospho-Lim Domain Kinase 2-Thr505 is suitable for use in Western Blot, Immunohistochemistry, Immunofluorescence, Immunocytochemistry and ELISA research applications.
Applications	WB, IHC-P, IF, ICC, ELISA
Host/Source	Rabbit
Reactivity	Human, Mouse, Rat

PRODUCT PROPERTIES

Clonality	Polyclonal
Clone ID	
Concentration	1 mg/mL
Conjugation	Unconjugated
Purification	The antibody was affinity-purified from rabbit anti-serum by affinity-chromatography.
Dilution Range	WB 1:500-1:2000 IHC 1:100-1:300 IF 1:200-1:1000 ELISA 1:10000
Formulation	PBS, 50% Glycerol, 0.5% BSA and 0.02% Sodium Azide.
Isotype	IgG
Storage Instruction	Store at -20°C for up to 1 year from the date of receipt, and avoid repeat freeze-thaw cycles.

TARGET INFORMATION

Gene ID	3985
Gene Symbol	LIMK2
Uniprot ID	LIMK2_HUMAN
Immunogen	Synthesized phospho-peptide around the phosphorylation site of human LIMK-2 (phospho Thr505)
Immunogen Region	
Specificity	Phospho-LIMK2-Thr505 polyclonal antibody (Lim Domain Kinase 2) binds to endogenous Lim Domain Kinase 2 only when phosphorylated at Thr505.
Immunogen Sequence	



Western blot analysis of various cells using Phospho-LIMK-2 (T505) Polyclonal Antibody