

Anti-Phospho-LIMK1-Thr508 antibody (440-520) (STJ90321)

STJ90321

GENERAL INFORMATION

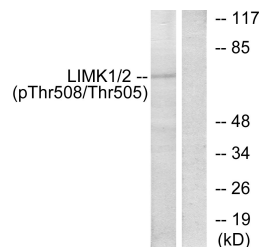
Product Type	Primary antibodies
Short Description	Rabbit polyclonal antibody anti-Phospho-Lim Domain Kinase 1-Thr508 (440-520) is suitable for use in Western Blot, Immunohistochemistry, Immunofluorescence, Immunocytochemistry and ELISA research applications.
Applications	WB, IHC-P, IF, ICC, ELISA
Host/Source	Rabbit
Reactivity	Human, Mouse, Rat

PRODUCT PROPERTIES

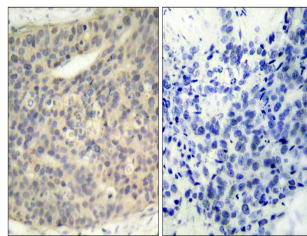
Clonality	Polyclonal
Clone ID	
Concentration	1 mg/mL
Conjugation	Unconjugated
Purification	The antibody was affinity-purified from rabbit anti-serum by affinity-chromatography.
Dilution Range	WB 1:500-1:2000 IHC 1:100-1:300 IF 1:200-1:1000 ELISA 1:10000
Formulation	PBS, 50% Glycerol, 0.5% BSA and 0.02% Sodium Azide.
Isotype	IgG
Storage Instruction	Store at -20°C for up to 1 year from the date of receipt, and avoid repeat freeze-thaw cycles.

TARGET INFORMATION

Gene ID	3984
Gene Symbol	LIMK1
Uniprot ID	LIMK1_HUMAN
Immunogen	The antiserum was produced against synthesized peptide derived from human LIMK1 around the phosphorylation site of Thr508 at amino acid range 471-520
Immunogen Region	440-520
Specificity	Phospho-LIMK1-Thr508 polyclonal antibody (Lim Domain Kinase 1) binds to endogenous Lim Domain Kinase 1 at the amino acid region 440-520 only when phosphorylated at Thr508.
Immunogen Sequence	



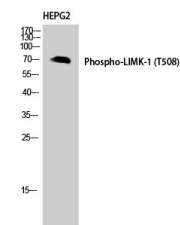
Western blot analysis of lysates from COL0205 cells, using LIMK1 (Phospho-Thr508) Antibody. The lane on the right is blocked with the phospho peptide.



Immunohistochemistry analysis of paraffin-embedded human breast carcinoma, using LIMK1 (Phospho-Thr508) Antibody. The picture on the right is blocked with the phospho peptide.



Western blot analysis of 293 cells using Phospho-LIMK-1 (T508) Polyclonal Antibody diluted at 1:1000.



Western blot analysis of HEPG2 cells using Phospho-LIMK-1 (T508) Polyclonal Antibody. Antibody was diluted at 1:1000.

This product is suitable for in-vitro studies under the RESEARCH USE ONLY [RUO] licence. This product must not be used as for diagnostic or other medical purposes.
St John's Laboratory Ltd, Knowledge Dock Business Centre, University Way, London, E16 2RD | Tel: 0208 223 3081