

Anti-Phospho-NFKBIA-Ser32/S36 antibody (10-90) (STJ90311)

STJ90311

GENERAL INFORMATION

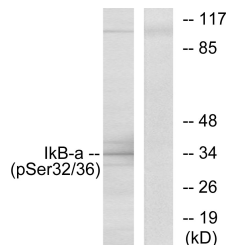
Product Type	Primary antibodies
Short Description	Rabbit polyclonal antibody anti-Phospho-NF-Kappa-B Inhibitor Alpha-Ser32/S36 (10-90) is suitable for use in Western Blot, Immunohistochemistry, Immunofluorescence, Immunocytochemistry and ELISA research applications.
Applications	WB, IHC-P, IF, ICC, ELISA
Host/Source	Rabbit
Reactivity	Human, Mouse, Rat, Monkey

PRODUCT PROPERTIES

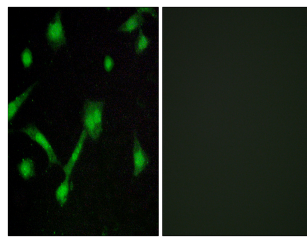
Clonality	Polyclonal
Clone ID	
Concentration	1 mg/mL
Conjugation	Unconjugated
Purification	The antibody was affinity-purified from rabbit anti-serum by affinity-chromatography.
Dilution Range	WB 1:500-1:2000 IHC 1:100-1:300 IF 1:200-1:1000 ELISA 1:10000
Formulation	PBS, 50% Glycerol, 0.5% BSA and 0.02% Sodium Azide.
Isotype	IgG
Storage Instruction	Store at -20°C for up to 1 year from the date of receipt, and avoid repeat freeze-thaw cycles.

TARGET INFORMATION

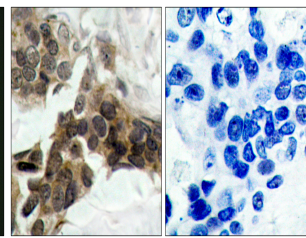
Gene ID	4792
Gene Symbol	NFKBIA
Uniprot ID	IKBA_HUMAN
Immunogen	The antiserum was produced against synthesized peptide derived from human IκappaB-alpha around the phosphorylation site of Ser32/Ser36 at amino acid range 15-64
Immunogen Region	10-90
Specificity	Phospho-NFKBIA-Ser32/S36 polyclonal antibody (NF-Kappa-B Inhibitor Alpha) binds to endogenous NF-Kappa-B Inhibitor Alpha at the amino acid region 10-90 only when phosphorylated at Ser32/S36.
Immunogen Sequence	



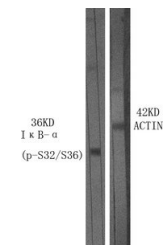
Western blot analysis of lysates from COS7 cells, using IκappaB-alpha (Phospho-Ser32/Ser36) Antibody. The lane on the right is blocked with the phospho peptide.



Immunofluorescence analysis of LOVO cells, using IκappaB-alpha (Phospho-Ser32/Ser36) Antibody. The picture on the right is blocked with the phospho peptide.



Immunohistochemistry analysis of paraffin-embedded human breast carcinoma, using IκappaB-alpha (Phospho-Ser32/Ser36) Antibody. The picture on the right is blocked with the phospho peptide.



Western blot analysis of various cells using Phospho-Iκappa B-Alpha (S32/S36) Polyclonal Antibody.

This product is suitable for in-vitro studies under the RESEARCH USE ONLY [RUO] licence. This product must not be used as for diagnostic or other medical purposes.
St John's Laboratory Ltd, Knowledge Dock Business Centre, University Way, London, E16 2RD | Tel: 0208 223 3081