

## Anti-Phospho-ITGB1-Thr788 antibody (720-800) (STJ90303)

STJ90303

### GENERAL INFORMATION

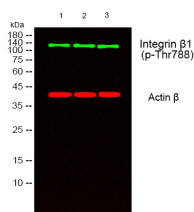
<b>Product Type</b>	Primary antibodies
<b>Short Description</b>	Rabbit polyclonal antibody anti-Phospho-Integrin Beta-1-Thr788 (720-800) is suitable for use in Western Blot, Immunohistochemistry, Immunofluorescence and ELISA research applications.
<b>Applications</b>	WB, IHC-P, IF-P, ELISA
<b>Host/Source</b>	Rabbit
<b>Reactivity</b>	Human, Mouse, Rat

### PRODUCT PROPERTIES

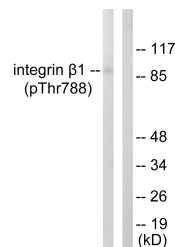
<b>Clonality</b>	Polyclonal
<b>Clone ID</b>	
<b>Concentration</b>	1 mg/mL
<b>Conjugation</b>	Unconjugated
<b>Purification</b>	The antibody was affinity-purified from rabbit anti-serum by affinity-chromatography.
<b>Dilution Range</b>	WB 1:500-1:2000 IHC 1:100-1:300 ELISA 1:20000
<b>Formulation</b>	PBS, 50% Glycerol, 0.5% BSA and 0.02% Sodium Azide.
<b>Isotype</b>	IgG
<b>Storage Instruction</b>	Store at -20°C for up to 1 year from the date of receipt, and avoid repeat freeze-thaw cycles.

### TARGET INFORMATION

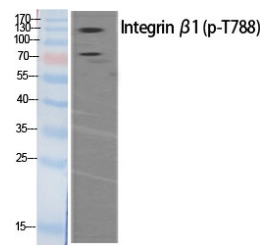
<b>Gene ID</b>	3688
<b>Gene Symbol</b>	ITGB1
<b>Uniprot ID</b>	ITB1_HUMAN
<b>Immunogen</b>	The antiserum was produced against synthesized peptide derived from human Integrin beta1 around the phosphorylation site of Thr788 at amino acid range 749-798
<b>Immunogen Region</b>	720-800
<b>Specificity</b>	Phospho-ITGB1-Thr788 polyclonal antibody (Integrin Beta-1) binds to endogenous Integrin Beta-1 at the amino acid region 720-800 only when phosphorylated at Thr788.
<b>Immunogen Sequence</b>	



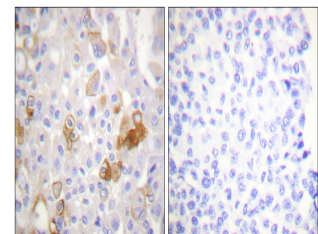
Western blot analysis of lysates from 1) HeLa, 2) 3T3, 3) Jurkat cells. (Green) primary antibody was diluted at 1:1000, 4°C over night, secondary antibody (cat: (NA) was diluted at 1:10000, 37°C 1hour. (Red) Actin Beta monoclonal antibody (5B7) (cat: (STJ99330) antibody was diluted at 1:5000 as loading control, 4°C over night, secondary antibody (cat: (NA) was diluted at 1:10000, 37°C 1hour.



Western blot analysis of lysates from HeLa cells treated with UV 15', using Integrin beta1 (Phospho-Thr788) Antibody. The lane on the right is blocked with the phospho peptide.



Western blot analysis of various cells using Phospho-Integrin Beta 1 (T788) Polyclonal Antibody



Immunohistochemistry analysis of paraffin-embedded human breast carcinoma, using Integrin beta1 (Phospho-Thr788) Antibody. The picture on the right is blocked with the phospho peptide.

This product is suitable for in-vitro studies under the RESEARCH USE ONLY [RUO] licence. This product must not be used as for diagnostic or other medical purposes.

St John's Laboratory Ltd, Knowledge Dock Business Centre, University Way, London, E16 2RD | Tel: 0208 223 3081