

Anti-Phospho-IKK Alpha/Beta-Ser180/181 antibody (120-200) (STJ90302)

STJ90302

GENERAL INFORMATION

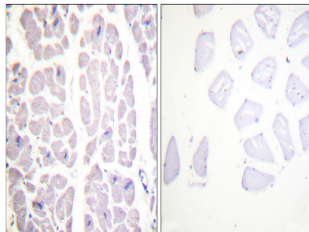
Product Type	Primary antibodies
Short Description	Rabbit polyclonal antibody anti-Phospho-Inhibitor of nuclear factor kappa-B kinase subunit alpha and Inhibitor of nuclear factor kappa-B kinase subunit beta-Ser180/181 (120-200) is suitable for use in Western Blot, Immunohistochemistry, Immunofluorescence
Applications	WB, IHC-P, IF-P, ELISA
Host/Source	Rabbit
Reactivity	Human, Mouse, Rat

PRODUCT PROPERTIES

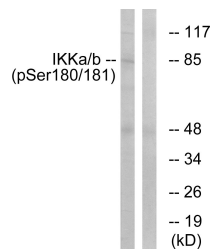
Clonality	Polyclonal
Clone ID	
Concentration	1 mg/mL
Conjugation	Unconjugated
Purification	The antibody was affinity-purified from rabbit anti-serum by affinity-chromatography.
Dilution	WB 1:500-1:2000
Range	IHC 1:100-1:300 ELISA 1:20000
Formulation	PBS, 50% Glycerol, 0.5% BSA and 0.02% Sodium Azide.
Isotype	IgG
Storage Instruction	Store at -20°C for up to 1 year from the date of receipt, and avoid repeat freeze-thaw cycles.

TARGET INFORMATION

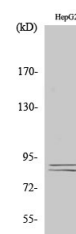
Gene ID	3551 1147
Gene Symbol	IKKBK CHUK
Uniprot ID	IKKB_HUMAN IKKA_HUMAN
Immunogen	The antiserum was produced against synthesized peptide derived from human IKK-alpha/beta around the phosphorylation site of Ser180/181 at amino acid range 151-200
Immunogen Region	120-200
Specificity	Phospho-IKK Alpha/Beta-Ser180/181 polyclonal antibody (Inhibitor of nuclear factor kappa-B kinase subunit alpha and Inhibitor of nuclear factor kappa-B kinase subunit beta) binds to endogenous Inhibitor of nuclear factor kappa-B kinase subunit alpha
Immunogen Sequence	



Immunohistochemistry analysis of paraffin-embedded human heart, using IKK-alpha/beta (Phospho-Ser180/181) Antibody. The picture on the right is blocked with the phospho peptide.



Western blot analysis of lysates from HepG2 cells treated with TNF 20ng/ml 5', using IKK-alpha/beta (Phospho-Ser180/181) Antibody. The lane on the right is blocked with the phospho peptide.



Western blot analysis of various cells using Phospho-IKK Alpha/Beta (S180/181) Polyclonal Antibody diluted at 1: 1000