

Anti-Phospho-ICAM1-Tyr512 antibody (450-530) (STJ90297)

STJ90297

GENERAL INFORMATION

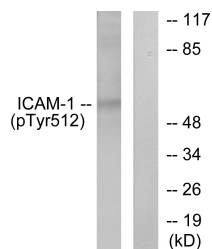
Product Type	Primary antibodies
Short Description	Rabbit polyclonal antibody anti-Phospho-Intercellular Adhesion Molecule 1-Tyr512 (450-530) is suitable for use in Western Blot and ELISA research applications.
Applications	WB, ELISA
Host/Source	Rabbit
Reactivity	Human, Rat, Mouse

PRODUCT PROPERTIES

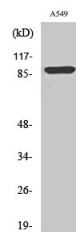
Clonality	Polyclonal
Clone ID	
Concentration	1 mg/mL
Conjugation	Unconjugated
Purification	The antibody was affinity-purified from rabbit anti-serum by affinity-chromatography.
Dilution	WB 1:500-1:2000
Range	ELISA 1:40000
Formulation	PBS, 50% Glycerol, 0.5% BSA and 0.02% Sodium Azide.
Isotype	IgG
Storage	Store at -20°C for up to 1 year from the date of receipt, and avoid repeat freeze-thaw cycles.
Instruction	

TARGET INFORMATION

Gene ID	3383
Gene Symbol	ICAM1
Uniprot ID	ICAM1_HUMAN
Immunogen	The antiserum was produced against synthesized peptide derived from human ICAM-1 around the phosphorylation site of Tyr512 at amino acid range 479-528
Immunogen Region	450-530
Specificity	Phospho-ICAM1-Tyr512 polyclonal antibody (Intercellular Adhesion Molecule 1) binds to endogenous Intercellular Adhesion Molecule 1 at the amino acid region 450-530 only when phosphorylated at Tyr512.
Immunogen Sequence	



Western blot analysis of lysates from HeLa cells treated with TNF-alpha 20ng/ml 5', using ICAM-1 (Phospho-Tyr512) Antibody. The lane on the right is blocked with the phospho peptide.



Western blot analysis of various cells using Phospho-ICAM-1 (Y512) Polyclonal Antibody diluted at 1: 500.