

Anti-Phospho-HSPB1-Ser82 antibody (20-100) (STJ90296)

STJ90296

GENERAL INFORMATION

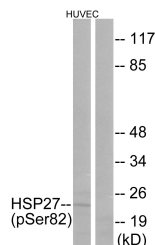
Product Type	Primary antibodies
Short Description	Rabbit polyclonal antibody anti-Phospho-Heat Shock Protein Beta-1-Ser82 (20-100) is suitable for use in Western Blot, Immunohistochemistry, Immunofluorescence and ELISA research applications.
Applications	WB, IHC-P, IF-P, ELISA
Host/Source	Rabbit
Reactivity	Human, Mouse, Rat

PRODUCT PROPERTIES

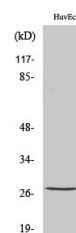
Clonality	Polyclonal
Clone ID	
Concentration	1 mg/mL
Conjugation	Unconjugated
Purification	The antibody was affinity-purified from rabbit anti-serum by affinity-chromatography.
Dilution	WB 1:500-1:2000
Range	IHC 1:100-1:300 ELISA 1:5000
Formulation	PBS, 50% Glycerol, 0.5% BSA and 0.02% Sodium Azide.
Isotype	IgG
Storage Instruction	Store at -20°C for up to 1 year from the date of receipt, and avoid repeat freeze-thaw cycles.

TARGET INFORMATION

Gene ID	3315
Gene Symbol	HSPB1
Uniprot ID	HSPB1_HUMAN
Immunogen	The antiserum was produced against synthesized peptide derived from human HSP27 around the phosphorylation site of Ser82 at amino acid range 48-97
Immunogen Region	20-100
Specificity	Phospho-HSPB1-Ser82 polyclonal antibody (Heat Shock Protein Beta-1) binds to endogenous Heat Shock Protein Beta-1 at the amino acid region 20-100 only when phosphorylated at Ser82.
Immunogen Sequence	



Western blot analysis of lysates from HUVEC cells treated with TNF 20ng/ml 30', using HSP27 (Phospho-Ser82) Antibody. The lane on the right is blocked with the phospho peptide.



Western blot analysis of various cells using Phospho-HSP27 (S82) Polyclonal Antibody diluted at 1:1000

This product is suitable for in-vitro studies under the RESEARCH USE ONLY [RUO] licence. This product must not be used as for diagnostic or other medical purposes.
St John's Laboratory Ltd, Knowledge Dock Business Centre, University Way, London, E16 2RD | Tel: 0208 223 3081