

## Anti-Phospho-HSF1-Ser303 antibody (240-320) (STJ90293)

STJ90293

### GENERAL INFORMATION

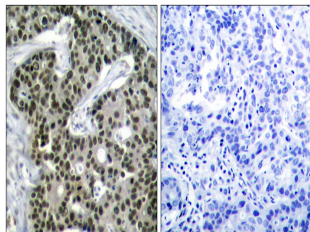
|                          |  |
|--------------------------|--|
| <b>Product Type</b>      | Primary antibodies   |
| <b>Short Description</b> | Rabbit polyclonal antibody anti-Phospho-Heat Shock Factor Protein 1-Ser303 (240-320) is suitable for use in Western Blot, Immunohistochemistry, Immunofluorescence, Immunocytochemistry and ELISA research applications. |
| <b>Applications</b>      | WB, IHC-P, IF, ICC, ELISA  |
| <b>Host/Source</b>       | Rabbit   |
| <b>Reactivity</b>        | Human, Mouse   |

### PRODUCT PROPERTIES

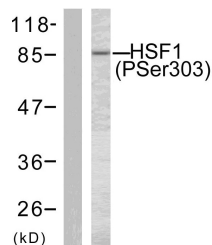
|                            |  |
|----------------------------|--|
| <b>Clonality</b>           | Polyclonal   |
| <b>Clone ID</b>            |  |
| <b>Concentration</b>       | 1 mg/mL  |
| <b>Conjugation</b>         | Unconjugated   |
| <b>Purification</b>        | The antibody was affinity-purified from rabbit anti-serum by affinity-chromatography.          |
| <b>Dilution Range</b>      | WB 1:500-1:2000<br>IHC 1:100-1:300<br>IF 1:200-1:1000<br>ELISA 1:20000                         |
| <b>Formulation</b>         | PBS, 50% Glycerol, 0.5% BSA and 0.02% Sodium Azide.  |
| <b>Isotype</b>             | IgG  |
| <b>Storage Instruction</b> | Store at -20°C for up to 1 year from the date of receipt, and avoid repeat freeze-thaw cycles. |

### TARGET INFORMATION

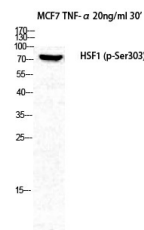
|                           |  |
|---------------------------|--|
| <b>Gene ID</b>            | 3297   |
| <b>Gene Symbol</b>        | HSF1   |
| <b>Uniprot ID</b>         | HSF1_HUMAN   |
| <b>Immunogen</b>          | The antiserum was produced against synthesized peptide derived from human HSF1 around the phosphorylation site of Ser303 at amino acid range 270-319                                       |
| <b>Immunogen Region</b>   | 240-320  |
| <b>Specificity</b>        | Phospho-HSF1-Ser303 polyclonal antibody (Heat Shock Factor Protein 1) binds to endogenous Heat Shock Factor Protein 1 at the amino acid region 240-320 only when phosphorylated at Ser303. |
| <b>Immunogen Sequence</b> |  |



Immunohistochemistry analysis of paraffin-embedded human breast carcinoma, using HSF1 (Phospho-Ser303) Antibody. The picture on the right is blocked with the phospho peptide.



Western blot analysis of lysates from MCF7 cells treated with TNF-alpha 20ng/ml 30', using HSF1 (Phospho-Ser303) Antibody. The lane on the left is blocked with the phospho peptide.



Western blot analysis of MCF7+TNF cells using Phospho-HSF1 (S303) Polyclonal Antibody diluted at 1: 1000