

## Anti-Phospho-Histone H3-Ser28 antibody (10-90) (STJ90290)

STJ90290

### GENERAL INFORMATION

<b>Product Type</b>	Primary antibodies
<b>Short Description</b>	Rabbit polyclonal antibody anti-Phospho-Histone H3.1 and Histone H3.2 and Histone H3.3-Ser28 (10-90) is suitable for use in Western Blot and ELISA research applications.
<b>Applications</b>	WB, ELISA
<b>Host/Source</b>	Rabbit
<b>Reactivity</b>	Human, Mouse, Rat

### PRODUCT PROPERTIES

<b>Clonality</b>	Polyclonal
<b>Clone ID</b>	
<b>Concentration</b>	1 mg/mL
<b>Conjugation</b>	Unconjugated
<b>Purification</b>	The antibody was affinity-purified from rabbit anti-serum by affinity-chromatography.
<b>Dilution</b>	WB 1:500-1:2000
<b>Range</b>	ELISA 1:5000
<b>Formulation</b>	PBS, 50% Glycerol, 0.5% BSA and 0.02% Sodium Azide.
<b>Isotype</b>	IgG
<b>Storage</b>	Store at -20°C for up to 1 year from the date of receipt, and avoid repeat freeze-thaw cycles.
<b>Instruction</b>	

### TARGET INFORMATION

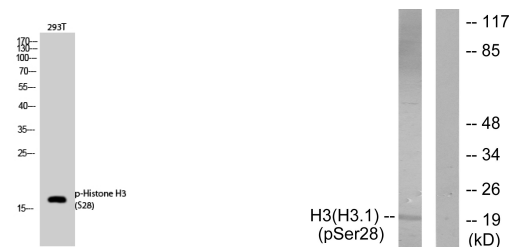
**Gene ID** [3020/3021](#)  
[126961/333932/653604](#)  
[H3-3A.H3-3B](#)  
[H3C15.H3C14.H3C13](#)  
[H33\\_HUMAN](#)  
[H32\\_HUMAN](#)  
[H31\\_HUMAN](#)

**Immunogen** The antiserum was produced against synthesized peptide derived from human Histone H3 around the phosphorylation site of Ser28 at amino acid range 13-62

**Immunogen Region** 10-90

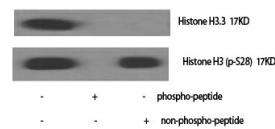
**Specificity** Phospho-Histone H3-Ser28 polyclonal antibody (Histone H3.1 and Histone H3.2 and Histone H3.3) binds to endogenous Histone H3.1 and Histone H3.2 and Histone H3.3 at the amino acid region 10-90 only when phosphorylated at Ser28.

**Immunogen Sequence**



Western blot analysis of 293T cells using Phospho-Histone H3 (Ser28) Polyclonal Antibody diluted at 1:1000 cells nucleus extracted by Minute TM Cytoplasmic and Nuclear Fractionation kit (SC-003, Inventibiotech, MN, USA).

Western blot analysis of lysates from HUVEC cells treated with Serum 20% 30' using Histone H3 (Phospho-Ser28) Antibody. The lane on the right is blocked with the phospho peptide.



Western blot analysis of various cells using Phospho-Histone H3 (Ser28) Polyclonal Antibody diluted at 1:1000 cells nucleus extracted by Minute TM Cytoplasmic and Nuclear Fractionation kit (SC-003, Inventibiotech, MN, USA).

This product is suitable for in-vitro studies under the RESEARCH USE ONLY [RUO] licence. This product must not be used as for diagnostic or other medical purposes.  
 St John's Laboratory Ltd, Knowledge Dock Business Centre, University Way, London, E16 2RD | Tel: 0208 223 3081