

Anti-Phospho-HDAC5-Ser498 antibody (440-520) (STJ90286)

STJ90286

GENERAL INFORMATION

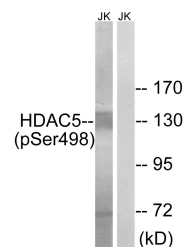
Product Type	Primary antibodies
Short Description	Rabbit polyclonal antibody anti-Phospho-Histone Deacetylase 5-Ser498 (440-520) is suitable for use in Western Blot, Immunohistochemistry, Immunofluorescence, Immunocytochemistry and ELISA research applications.
Applications	WB, IHC-P, IF, ICC, ELISA
Host/Source	Rabbit
Reactivity	Human, Mouse

PRODUCT PROPERTIES

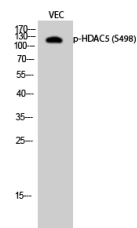
Clonality	Polyclonal
Clone ID	
Concentration	1 mg/mL
Conjugation	Unconjugated
Purification	The antibody was affinity-purified from rabbit anti-serum by affinity-chromatography.
Dilution	WB 1:500-1:2000
Range	IHC 1:100-1:300 IF 1:200-1:1000 ELISA 1:20000
Formulation	PBS, 50% Glycerol, 0.5% BSA and 0.02% Sodium Azide.
Isotype	IgG
Storage Instruction	Store at -20°C for up to 1 year from the date of receipt, and avoid repeat freeze-thaw cycles.

TARGET INFORMATION

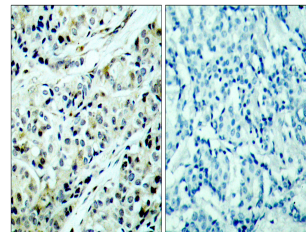
Gene ID	10014
Gene Symbol	HDAC5
Uniprot ID	HDAC5_HUMAN
Immunogen	The antiserum was produced against synthesized peptide derived from human HDAC5 around the phosphorylation site of Ser498 at amino acid range 464-513
Immunogen Region	440-520
Specificity	Phospho-HDAC5-Ser498 polyclonal antibody (Histone Deacetylase 5) binds to endogenous Histone Deacetylase 5 at the amino acid region 440-520 only when phosphorylated at Ser498.
Immunogen Sequence	



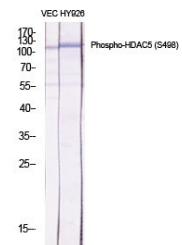
Western blot analysis of lysates from Jurkat cells, using HDAC5 (Phospho-Ser498) Antibody. The lane on the right is blocked with the phospho peptide.



Western blot analysis of VEC cells using Phospho-HDAC5 (S498) Polyclonal Antibody diluted at 1: 500



Immunohistochemistry analysis of paraffin-embedded human breast carcinoma, using HDAC5 (Phospho-Ser498) Antibody. The picture on the right is blocked with the phospho peptide.



Western blot analysis of various cells using Phospho-HDAC5 (S498) Polyclonal Antibody diluted at 1: 500

This product is suitable for in-vitro studies under the RESEARCH USE ONLY [RUO] licence. This product must not be used as for diagnostic or other medical purposes.
St John's Laboratory Ltd, Knowledge Dock Business Centre, University Way, London, E16 2RD | Tel: 0208 223 3081