

Anti-Phospho-GSK3B-Ser9 antibody (1-80) (STJ90284)

STJ90284

GENERAL INFORMATION

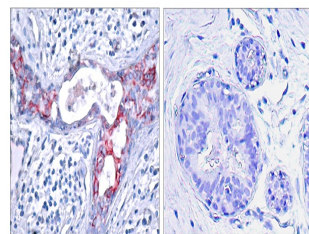
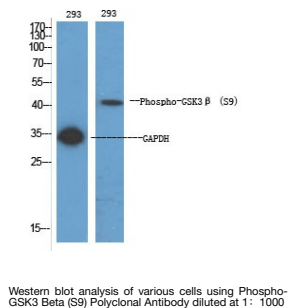
Product Type	Primary antibodies
Short Description	Rabbit polyclonal antibody anti-Phospho-Glycogen Synthase Kinase-3 Beta-Ser9 (1-80) is suitable for use in Immunofluorescence, Immunocytochemistry, Western Blot, Immunohistochemistry, Immunoprecipitation and ELISA research applications.
Applications	IF, ICC, WB, IHC-P, IP, ELISA
Host/Source	Rabbit
Reactivity	Human, Mouse, Rat

PRODUCT PROPERTIES

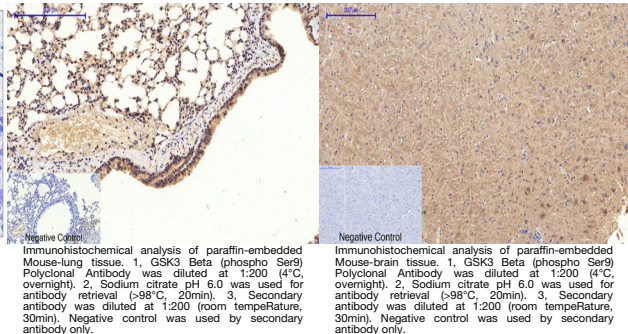
Clonality	Polyclonal
Clone ID	
Concentration	1 mg/mL
Conjugation	Unconjugated
Purification	The antibody was affinity-purified from rabbit anti-serum by affinity-chromatography.
Dilution Range	IF 1:50-200 WB 1:500-1:2000 IHC 1:100-1:300 IP 2-5 ug/mg ELISA 1:5000
Formulation	PBS, 50% Glycerol, 0.5% BSA and 0.02% Sodium Azide.
Isotype	IgG
Storage Instruction	Store at -20°C for up to 1 year from the date of receipt, and avoid repeat freeze-thaw cycles.

TARGET INFORMATION

Gene ID	2932
Gene Symbol	GSK3B
Uniprot ID	GSK3B_HUMAN
Immunogen	The antiserum was produced against synthesized peptide derived from human GSK3 beta around the phosphorylation site of Ser9 at amino acid range 1-50
Immunogen Region	1-80
Specificity	Phospho-GSK3B-Ser9 polyclonal antibody (Glycogen Synthase Kinase-3 Beta) binds to endogenous Glycogen Synthase Kinase-3 Beta at the amino acid region 1-80 only when phosphorylated at Ser9.
Immunogen Sequence	



Immunohistochemistry analysis of paraffin-embedded human breast carcinoma, using GSK3 beta (Phospho-Ser9) Antibody. The picture on the right is blocked with the phospho peptide.



Immunohistochemical analysis of paraffin-embedded Mouse-lung tissue. 1, GSK3 Beta (phospho Ser9) Polyclonal Antibody was diluted at 1:200 (4°C, overnight). 2, Sodium citrate pH 6.0 was used for antibody retrieval (>98°C, 20min). 3, Secondary antibody was diluted at 1:200 (room temperature, 30min). Negative control was used by secondary antibody only.

Immunohistochemical analysis of paraffin-embedded Mouse-brain tissue. 1, GSK3 Beta (phospho Ser9) Polyclonal Antibody was diluted at 1:200 (4°C, overnight). 2, Sodium citrate pH 6.0 was used for antibody retrieval (>98°C, 20min). 3, Secondary antibody was diluted at 1:200 (room temperature, 30min). Negative control was used by secondary antibody only.

This product is suitable for in-vitro studies under the RESEARCH USE ONLY [RUO] licence. This product must not be used as for diagnostic or other medical purposes.
St John's Laboratory Ltd, Knowledge Dock Business Centre, University Way, London, E16 2RD | Tel: 0208 223 3081