

Anti-Phospho-GSK3 Alpha/Beta-Tyr279/216 antibody (220-300) (STJ90283)

STJ90283

GENERAL INFORMATION

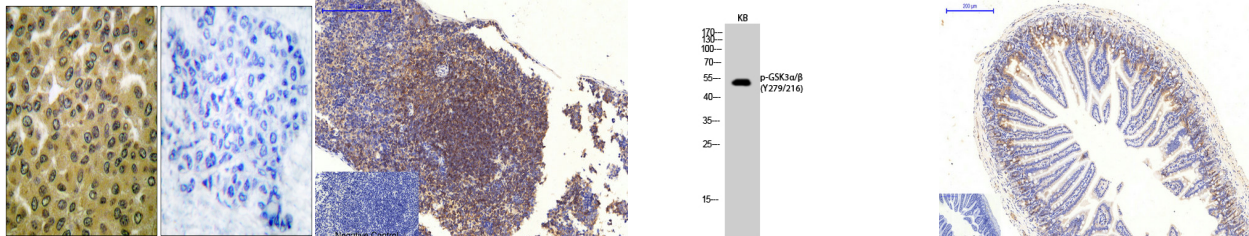
Product Type	Primary antibodies
Short Description	Rabbit polyclonal antibody anti-Phospho-Glycogen synthase kinase-3 alpha and Glycogen synthase kinase-3 beta-Tyr279/216 (220-300) is suitable for use in Immunofluorescence, Immunocytochemistry, Western Blot, Immunohistochemistry and ELISA research ap
Applications	IF, ICC, WB, IHC-P, ELISA
Host/Source	Rabbit
Reactivity	Human, Mouse, Rat

PRODUCT PROPERTIES

Clonality	Polyclonal
Clone ID	
Concentration	1 mg/mL
Conjugation	Unconjugated
Purification	The antibody was affinity-purified from rabbit anti-serum by affinity-chromatography.
Dilution	IF 1:50-200
Range	WB 1:500-1:2000 IHC 1:100-1:300 ELISA 1:20000
Formulation	PBS, 50% Glycerol, 0.5% BSA and 0.02% Sodium Azide.
Isotype	IgG
Storage Instruction	Store at -20°C for up to 1 year from the date of receipt, and avoid repeat freeze-thaw cycles.

TARGET INFORMATION

Gene ID	2931 2932
Gene Symbol	GSK3A GSK3B
Uniprot ID	GSK3A_HUMAN GSK3B_HUMAN
Immunogen	The antiserum was produced against synthesized peptide derived from human GSK3 alpha/beta around the phosphorylation site of Tyr279/216 at amino acid range 246-295
Immunogen Region	220-300
Specificity	Phospho-GSK3 Alpha/Beta-Tyr279/216 polyclonal antibody (Glycogen synthase kinase-3 alpha and Glycogen synthase kinase-3 beta) binds to endogenous Glycogen synthase kinase-3 alpha and Glycogen synthase kinase-3 beta at the amino acid region 220-300 on
Immunogen Sequence	



Immunohistochemistry analysis of paraffin-embedded human breast carcinoma, using GSK3 alpha/beta (Phospho-Tyr279/216) Antibody. The picture on the right is blocked with the phospho peptide.

Immunohistochemical analysis of paraffin-embedded Mouse-spleen tissue. 1. GSK3 Alpha/Beta (phospho Tyr279/216) Polyclonal Antibody was diluted at 1:200 (4°C, overnight). 2. Sodium citrate pH 6.0 was used for antibody retrieval (>98°C, 20min). 3. Secondary antibody was diluted at 1:200 (room temperature, 30min). Negative control was used by secondary antibody only.

Western blot analysis of KB cells using Phospho-GSK3 Alpha/Beta (Y279/216) Polyclonal Antibody

Immunohistochemical analysis of paraffin-embedded Mouse-colon tissue. 1. GSK3 Alpha/Beta (phospho Tyr279/216) Polyclonal Antibody was diluted at 1:200 (4°C, overnight). 2. Sodium citrate pH 6.0 was used for antibody retrieval (>98°C, 20min). 3. Secondary antibody was diluted at 1:200 (room temperature, 30min). Negative control was used by secondary antibody only.

This product is suitable for in-vitro studies under the RESEARCH USE ONLY [RUO] licence. This product must not be used as for diagnostic or other medical purposes.
St John's Laboratory Ltd, Knowledge Dock Business Centre, University Way, London, E16 2RD | Tel: 0208 223 3081