

Anti-Phospho-GAP43-Ser41 antibody (20-100) (STJ90279)

STJ90279

GENERAL INFORMATION

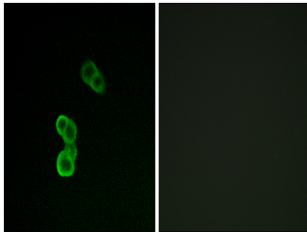
Product Type	Primary antibodies
Short Description	Rabbit polyclonal antibody anti-Phospho-Neuromodulin-Ser41 (20-100) is suitable for use in Immunofluorescence, Immunocytochemistry and ELISA research applications.
Applications	IF, ICC, ELISA
Host/Source	Rabbit
Reactivity	Human, Mouse, Rat

PRODUCT PROPERTIES

Clonality	Polyclonal
Clone ID	
Concentration	1 mg/mL
Conjugation	Unconjugated
Purification	The antibody was affinity-purified from rabbit anti-serum by affinity-chromatography.
Dilution Range	IF 1:200-1:1000 ELISA 1:20000
Formulation	PBS, 50% Glycerol, 0.5% BSA and 0.02% Sodium Azide.
Isotype	IgG
Storage	Store at -20°C for up to 1 year from the date of receipt, and avoid repeat freeze-thaw cycles.
Instruction	

TARGET INFORMATION

Gene ID	2596
Gene Symbol	GAP43
Uniprot ID	NEUM_HUMAN
Immunogen	The antiserum was produced against synthesized peptide derived from human GAP43 around the phosphorylation site of Ser41 at amino acid range 8-57
Immunogen Region	20-100
Specificity	Phospho-GAP43-Ser41 polyclonal antibody (Neuromodulin) binds to endogenous Neuromodulin at the amino acid region 20-100 only when phosphorylated at Ser41.
Immunogen Sequence	



Immunofluorescence analysis of MCF-7 cells, using GAP43 (Phospho-Ser41) Antibody. The picture on the right is blocked with the phospho peptide.