

Anti-Phospho-GAB1-Tyr627 antibody (570-650) (STJ90278)

STJ90278

GENERAL INFORMATION

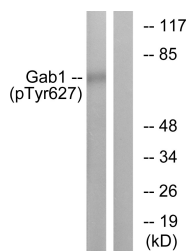
Product Type	Primary antibodies
Short Description	Rabbit polyclonal antibody anti-Phospho-Grb2-Associated-Binding Protein 1-Tyr627 (570-650) is suitable for use in Western Blot and ELISA research applications.
Applications	WB, ELISA
Host/Source	Rabbit
Reactivity	Human, Mouse, Monkey

PRODUCT PROPERTIES

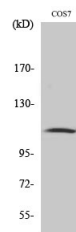
Clonality	Polyclonal
Clone ID	
Concentration	1 mg/mL
Conjugation	Unconjugated
Purification	The antibody was affinity-purified from rabbit anti-serum by affinity-chromatography.
Dilution	WB 1:500-1:2000
Range	ELISA 1:10000
Formulation	PBS, 50% Glycerol, 0.5% BSA and 0.02% Sodium Azide.
Isotype	IgG
Storage	Store at -20°C for up to 1 year from the date of receipt, and avoid repeat freeze-thaw cycles.
Instruction	

TARGET INFORMATION

Gene ID	2549
Gene Symbol	GAB1
Uniprot ID	GAB1_HUMAN
Immunogen	The antiserum was produced against synthesized peptide derived from human GAB1 around the phosphorylation site of Tyr627 amino acid range:611-643
Immunogen Region	570-650
Specificity	Phospho-GAB1-Tyr627 polyclonal antibody (Grb2-Associated-Binding Protein 1) binds to endogenous Grb2-Associated-Binding Protein 1 at the amino acid region 570-650 only when phosphorylated at Tyr627.
Immunogen Sequence	



Western blot analysis of GAB1 (Phospho-Tyr627) Antibody. The lane on the right is blocked with the GAB1 (Phospho-Tyr627) peptide.



Western blot analysis of various cells using Phospho-Gab 1 (Y627) Polyclonal Antibody

This product is suitable for in-vitro studies under the RESEARCH USE ONLY [RUO] licence. This product must not be used as for diagnostic or other medical purposes.
 St John's Laboratory Ltd, Knowledge Dock Business Centre, University Way, London, E16 2RD | Tel: 0208 223 3081