

## Anti-Phospho-FOXO3-Ser253 antibody (190-270) (STJ90275)

STJ90275

### GENERAL INFORMATION

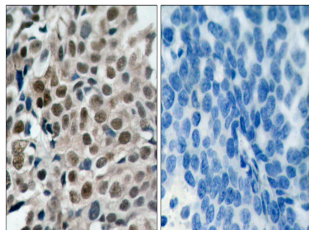
<b>Product Type</b>	Primary antibodies
<b>Short Description</b>	Rabbit polyclonal antibody anti-Phospho-Forkhead Box Protein O3-Ser253 (190-270) is suitable for use in Western Blot, Immunohistochemistry, Immunofluorescence, Immunocytochemistry and ELISA research applications.
<b>Applications</b>	WB, IHC-P, IF, ICC, ELISA
<b>Host/Source</b>	Rabbit
<b>Reactivity</b>	Human, Mouse, Rat

### PRODUCT PROPERTIES

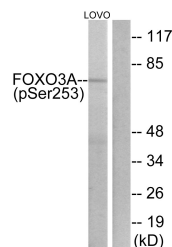
<b>Clonality</b>	Polyclonal
<b>Clone ID</b>	
<b>Concentration</b>	1 mg/mL
<b>Conjugation</b>	Unconjugated
<b>Purification</b>	The antibody was affinity-purified from rabbit anti-serum by affinity-chromatography.
<b>Dilution</b>	WB 1:500-1:2000
<b>Range</b>	IHC 1:100-1:300 IF 1:200-1:1000 ELISA 1:20000
<b>Formulation</b>	PBS, 50% Glycerol, 0.5% BSA and 0.02% Sodium Azide.
<b>Isotype</b>	IgG
<b>Storage Instruction</b>	Store at -20°C for up to 1 year from the date of receipt, and avoid repeat freeze-thaw cycles.

### TARGET INFORMATION

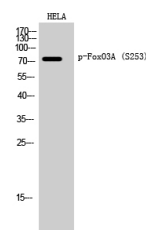
<b>Gene ID</b>	2309
<b>Gene Symbol</b>	FOXO3
<b>Uniprot ID</b>	FOXO3_HUMAN
<b>Immunogen</b>	The antiserum was produced against synthesized peptide derived from human FKHL1 around the phosphorylation site of Ser253 at amino acid range 220-269
<b>Immunogen Region</b>	190-270
<b>Specificity</b>	Phospho-FOXO3-Ser253 polyclonal antibody (Forkhead Box Protein O3) binds to endogenous Forkhead Box Protein O3 at the amino acid region 190-270 only when phosphorylated at Ser253.
<b>Immunogen Sequence</b>	



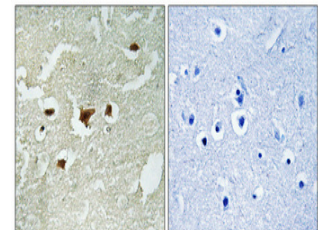
Immunohistochemistry analysis of paraffin-embedded human breast carcinoma, using FKHL1 (Phospho-Ser253) Antibody. The picture on the right is blocked with the phospho peptide.



Western blot analysis of lysates from LOVO cells treated with serum 20% 30', using FKHL1 (Phospho-Ser253) Antibody. The lane on the right is blocked with the phospho peptide.



Western blot analysis of HELA cells using Phospho-FoxO3A (S253) Polyclonal Antibody diluted at 1: 2000



Immunohistochemical analysis of paraffin-embedded Human brain. Antibody was diluted at 1:100 (4°C overnight). High-pressure and temperature Tris-EDTA, pH8.0 was used for antigen retrieval. Negative control (right) obtained from antigen retrieval. Negative control (right) obtained from antigen retrieval. Negative control (right) obtained from antigen retrieval. Negative control (right) obtained from antigen retrieval.

This product is suitable for in-vitro studies under the RESEARCH USE ONLY [RUO] licence. This product must not be used as for diagnostic or other medical purposes.

St John's Laboratory Ltd, Knowledge Dock Business Centre, University Way, London, E16 2RD | Tel: 0208 223 3081