

Anti-Phospho-KDR-Tyr951 antibody (890-970) (STJ90272)

STJ90272

GENERAL INFORMATION

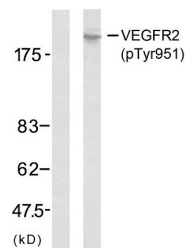
Product Type	Primary antibodies
Short Description	Rabbit polyclonal antibody anti-Phospho-Vascular Endothelial Growth Factor Receptor 2-Tyr951 (890-970) is suitable for use in Western Blot, Immunohistochemistry, Immunofluorescence, Immunocytochemistry and ELISA research applications.
Applications	WB, IHC-P, IF, ICC, ELISA
Host/Source	Rabbit
Reactivity	Human, Mouse

PRODUCT PROPERTIES

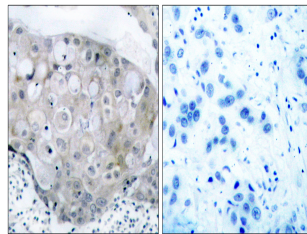
Clonality	Polyclonal
Clone ID	
Concentration	1 mg/mL
Conjugation	Unconjugated
Purification	The antibody was affinity-purified from rabbit anti-serum by affinity-chromatography.
Dilution Range	WB 1:500-1:2000 IHC 1:100-1:300 IF 1:200-1:1000 ELISA 1:20000
Formulation	PBS, 50% Glycerol, 0.5% BSA and 0.02% Sodium Azide.
Isotype	IgG
Storage Instruction	Store at -20°C for up to 1 year from the date of receipt, and avoid repeat freeze-thaw cycles.

TARGET INFORMATION

Gene ID	3791
Gene Symbol	KDR
Uniprot ID	VGFR2_HUMAN
Immunogen	The antiserum was produced against synthesized peptide derived from human VEGFR2 around the phosphorylation site of Tyr951 at amino acid range 917-966
Immunogen Region	890-970
Specificity	Phospho-KDR-Tyr951 polyclonal antibody (Vascular Endothelial Growth Factor Receptor 2) binds to endogenous Vascular Endothelial Growth Factor Receptor 2 at the amino acid region 890-970 only when phosphorylated at Tyr951.
Immunogen Sequence	



Western blot analysis of lysates from SK-OV3 cells, using VEGFR2 (Phospho-Tyr951) Antibody. The lane on the left is blocked with the phospho peptide.



Immunohistochemistry analysis of paraffin-embedded human breast carcinoma, using VEGFR2 (Phospho-Tyr951) Antibody. The picture on the right is blocked with the phospho peptide.