

Anti-Phospho-EZR-Tyr353 antibody (290-370) (STJ90267)

STJ90267

GENERAL INFORMATION

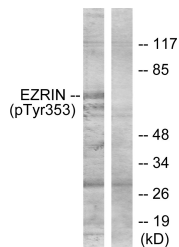
Product Type	Primary antibodies
Short Description	Rabbit polyclonal antibody anti-Phospho-Ezrin-Tyr353 (290-370) is suitable for use in Western Blot and ELISA research applications.
Applications	WB, ELISA
Host/Source	Rabbit
Reactivity	Human, Mouse, Rat

PRODUCT PROPERTIES

Clonality	Polyclonal
Clone ID	
Concentration	1 mg/mL
Conjugation	Unconjugated
Purification	The antibody was affinity-purified from rabbit anti-serum by affinity-chromatography.
Dilution Range	WB 1:500-1:2000 ELISA 1:20000
Formulation	PBS, 50% Glycerol, 0.5% BSA and 0.02% Sodium Azide.
Isotype	IgG
Storage	Store at -20°C for up to 1 year from the date of receipt, and avoid repeat freeze-thaw cycles.
Instruction	

TARGET INFORMATION

Gene ID	7430
Gene Symbol	EZR
Uniprot ID	EZRI_HUMAN
Immunogen	The antiserum was produced against synthesized peptide derived from human Ezrin around the phosphorylation site of Tyr353 at amino acid range 321-370
Immunogen Region	290-370
Specificity	Phospho-EZR-Tyr353 polyclonal antibody (Ezrin) binds to endogenous Ezrin at the amino acid region 290-370 only when phosphorylated at Tyr353.
Immunogen Sequence	



Western blot analysis of lysates from A431 cells treated with EGF 200ng/ml 30', using Ezrin (Phospho-Tyr353) Antibody. The lane on the right is blocked with the phospho peptide.