

Anti-Phospho-EZR-Thr566 antibody (510-590) (STJ90266)

STJ90266

GENERAL INFORMATION

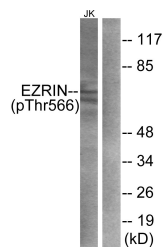
Product Type	Primary antibodies
Short Description	Rabbit polyclonal antibody anti-Phospho-Ezrin-Thr566 (510-590) is suitable for use in Western Blot and ELISA research applications.
Applications	WB, ELISA
Host/Source	Rabbit
Reactivity	Human, Mouse, Rat

PRODUCT PROPERTIES

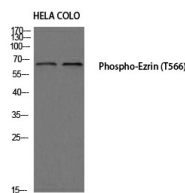
Clonality	Polyclonal
Clone ID	
Concentration	1 mg/mL
Conjugation	Unconjugated
Purification	The antibody was affinity-purified from rabbit anti-serum by affinity-chromatography.
Dilution Range	WB 1:500-1:2000 ELISA 1:20000
Formulation	PBS, 50% Glycerol, 0.5% BSA and 0.02% Sodium Azide.
Isotype	IgG
Storage	Store at -20°C for up to 1 year from the date of receipt, and avoid repeat freeze-thaw cycles.
Instruction	

TARGET INFORMATION

Gene ID	7430
Gene Symbol	EZR
Uniprot ID	EZRI_HUMAN
Immunogen	The antiserum was produced against synthesized peptide derived from human Ezrin around the phosphorylation site of Thr566 at amino acid range 534-583
Immunogen Region	510-590
Specificity	Phospho-EZR-Thr566 polyclonal antibody (Ezrin) binds to endogenous Ezrin at the amino acid region 510-590 only when phosphorylated at Thr566.
Immunogen Sequence	



Western blot analysis of lysates from Jurkat cells treated PMA 125ng/ml 30', using Ezrin (Phospho-Thr566) Antibody. The lane on the right is blocked with the phospho peptide.



Western blot analysis of HELA COLO using Phospho-Ezrin (T566) antibody. Antibody was diluted at 1:1000

This product is suitable for in-vitro studies under the RESEARCH USE ONLY [RUO] licence. This product must not be used as for diagnostic or other medical purposes.
St John's Laboratory Ltd, Knowledge Dock Business Centre, University Way, London, E16 2RD | Tel: 0208 223 3081