

## Anti-Phospho-ESR1-Ser106 antibody (40-120) (STJ90263)

STJ90263

### GENERAL INFORMATION

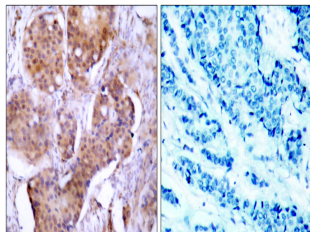
<b>Product Type</b>	Primary antibodies
<b>Short Description</b>	Rabbit polyclonal antibody anti-Phospho-Estrogen Receptor-Ser106 (40-120) is suitable for use in Western Blot, Immunohistochemistry, Immunofluorescence, Immunocytochemistry and ELISA research applications.
<b>Applications</b>	WB, IHC-P, IF, ICC, ELISA
<b>Host/Source</b>	Rabbit
<b>Reactivity</b>	Human, Mouse, Rat

### PRODUCT PROPERTIES

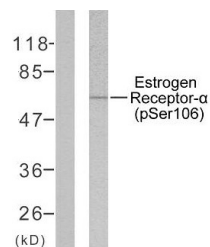
<b>Clonality</b>	Polyclonal
<b>Clone ID</b>	
<b>Concentration</b>	1 mg/mL
<b>Conjugation</b>	Unconjugated
<b>Purification</b>	The antibody was affinity-purified from rabbit anti-serum by affinity-chromatography.
<b>Dilution Range</b>	WB 1:500-1:2000 IHC 1:100-1:300 IF 1:200-1:1000 ELISA 1:40000
<b>Formulation</b>	PBS, 50% Glycerol, 0.5% BSA and 0.02% Sodium Azide.
<b>Isotype</b>	IgG
<b>Storage Instruction</b>	Store at -20°C for up to 1 year from the date of receipt, and avoid repeat freeze-thaw cycles.

### TARGET INFORMATION

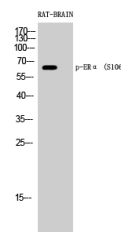
<b>Gene ID</b>	2099
<b>Gene Symbol</b>	ESR1
<b>Uniprot ID</b>	ESR1_HUMAN
<b>Immunogen</b>	The antiserum was produced against synthesized peptide derived from human Estrogen Receptor-alpha around the phosphorylation site of Ser106 at amino acid range 71-120
<b>Immunogen Region</b>	40-120
<b>Specificity</b>	Phospho-ESR1-Ser106 polyclonal antibody (Estrogen Receptor) binds to endogenous Estrogen Receptor at the amino acid region 40-120 only when phosphorylated at Ser106.
<b>Immunogen Sequence</b>	



Immunohistochemistry analysis of paraffin-embedded human breast carcinoma, using Estrogen Receptor-alpha (Phospho-Ser106) Antibody. The picture on the right is blocked with the phospho peptide.



Western blot analysis of lysates from MCF7 cells, using Estrogen Receptor-alpha (Phospho-Ser106) Antibody. The lane on the left is blocked with the phospho peptide.



Western blot analysis of RAT-BRAIN cells using Phospho-ER Alpha (S106) Polyclonal Antibody diluted at 1: 500

This product is suitable for in-vitro studies under the RESEARCH USE ONLY [RUO] licence. This product must not be used as for diagnostic or other medical purposes.  
St John's Laboratory Ltd, Knowledge Dock Business Centre, University Way, London, E16 2RD | Tel: 0208 223 3081