

Anti-Phospho-ERK 1/2-Tyr204 antibody (140-220) (STJ90261)

STJ90261

GENERAL INFORMATION

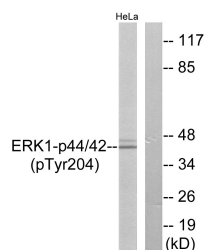
| | |
|--------------------------|--|
| Product Type | Primary antibodies |
| Short Description | Rabbit polyclonal antibody anti-Phospho-Mitogen-activated protein kinase 3 and Mitogen-activated protein kinase 1-Tyr204 (140-220) is suitable for use in Western Blot, Immunohistochemistry, Immunofluorescence, Immunocytochemistry and ELISA research a |
| Applications | WB, IHC-P, IF, ICC, ELISA |
| Host/Source | Rabbit |
| Reactivity | Human, Mouse, Rat |

PRODUCT PROPERTIES

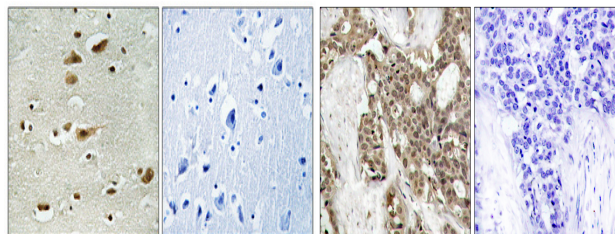
| | |
|----------------------------|--|
| Clonality | Polyclonal |
| Clone ID | |
| Concentration | 1 mg/mL |
| Conjugation | Unconjugated |
| Purification | The antibody was affinity-purified from rabbit anti-serum by affinity-chromatography. |
| Dilution Range | WB 1:500-1:2000 IHC 1:100-1:300 IF 1:200-1:1000 ELISA 1:10000 |
| Formulation | PBS, 50% Glycerol, 0.5% BSA and 0.02% Sodium Azide. |
| Isotype | IgG |
| Storage Instruction | Store at -20°C for up to 1 year from the date of receipt, and avoid repeat freeze-thaw cycles. |

TARGET INFORMATION

| | |
|---------------------------|--|
| Gene ID | 5594 5595 |
| Gene Symbol | MAPK1 MAPK3 |
| Uniprot ID | MK01_HUMAN MK03_HUMAN |
| Immunogen | The antiserum was produced against synthesized peptide derived from human p44/42 MAP Kinase around the phosphorylation site of Tyr204 at amino acid range 170-219 |
| Immunogen Region | 140-220 |
| Specificity | Phospho-ERK 1/2-Tyr204 polyclonal antibody (Mitogen-activated protein kinase 3 and Mitogen-activated protein kinase 1) binds to endogenous Mitogen-activated protein kinase 3 and Mitogen-activated protein kinase 1 at the amino acid region 140-220 only |
| Immunogen Sequence | |

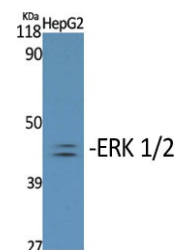


Western blot analysis of lysates from HeLa cells treated with EGF 200ng/ml 30', using p44/42 MAP Kinase (Phospho-Tyr204) Antibody. The lane on the right is blocked with the phospho peptide.



Immunohistochemical analysis of paraffin-embedded Human brain. Antibody was diluted at 1:100 (4°C overnight). High-pressure and temperature Tris-EDTA, pH8.0 was used for antigen retrieval. Negative control (right) obtained from antibody was pre-absorbed by immunogen peptide.

Immunohistochemistry analysis of paraffin-embedded human breast carcinoma, using p44/42 MAP Kinase (Phospho-Tyr204) Antibody. The picture on the right is blocked with the phospho peptide.



Western blot analysis of various cells using Phospho-ERK 1/2 (Y204) Polyclonal Antibody diluted at 1: 2000.