

Anti-Phospho-ERBIN-Tyr1104 antibody (STJ90259)

STJ90259

GENERAL INFORMATION

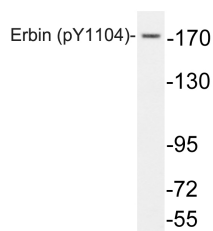
Product Type	Primary antibodies
Short Description	Rabbit polyclonal antibody anti-Phospho-Erbin-Tyr1104 is suitable for use in Western Blot and ELISA research applications.
Applications	WB, ELISA
Host/Source	Rabbit
Reactivity	Human, Rat, Mouse

PRODUCT PROPERTIES

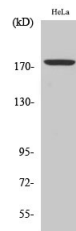
Clonality	Polyclonal
Clone ID	
Concentration	1 mg/mL
Conjugation	Unconjugated
Purification	The antibody was affinity-purified from rabbit anti-serum by affinity-chromatography.
Dilution Range	WB 1:500-1:2000 ELISA 1:10000
Formulation	PBS, 50% Glycerol, 0.5% BSA and 0.02% Sodium Azide.
Isotype	IgG
Storage Instruction	Store at -20°C for up to 1 year from the date of receipt, and avoid repeat freeze-thaw cycles.

TARGET INFORMATION

Gene ID	55914
Gene Symbol	ERBIN
Uniprot ID	ERBIN_HUMAN
Immunogen	Synthesized phospho-peptide around the phosphorylation site of human Erbin (phospho Tyr1104)
Immunogen Region	
Specificity	Phospho-ERBIN-Tyr1104 polyclonal antibody (Erbin) binds to endogenous Erbin only when phosphorylated at Tyr1104.
Immunogen Sequence	



Western blot analysis of lysates from HeLa cells, using phospho-Erbin (Phospho-Tyr1104) antibody.



Western blot analysis of various cells using Phospho-Erbin (Y1104) Polyclonal Antibody

This product is suitable for in-vitro studies under the RESEARCH USE ONLY [RUO] licence. This product must not be used as for diagnostic or other medical purposes.

St John's Laboratory Ltd, Knowledge Dock Business Centre, University Way, London, E16 2RD | Tel: 0208 223 3081