

## Anti-Phospho-EPHA2-Tyr588 antibody (STJ90258)

STJ90258

### GENERAL INFORMATION

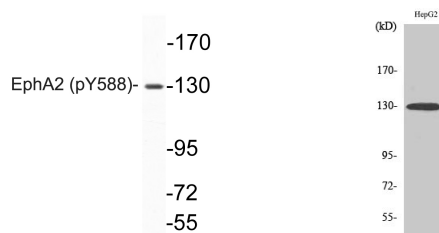
<b>Product Type</b>	Primary antibodies
<b>Short Description</b>	Rabbit polyclonal antibody anti-Phospho-Ephrin Type-A Receptor 2-Tyr588 is suitable for use in Western Blot and ELISA research applications.
<b>Applications</b>	WB, ELISA
<b>Host/Source</b>	Rabbit
<b>Reactivity</b>	Human, Mouse

### PRODUCT PROPERTIES

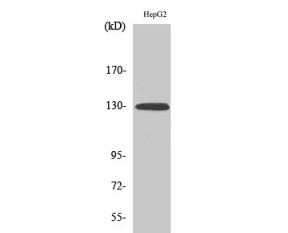
<b>Clonality</b>	Polyclonal
<b>Clone ID</b>	
<b>Concentration</b>	1 mg/mL
<b>Conjugation</b>	Unconjugated
<b>Purification</b>	The antibody was affinity-purified from rabbit anti-serum by affinity-chromatography.
<b>Dilution Range</b>	WB 1:500-1:2000 ELISA 1:10000
<b>Formulation</b>	PBS, 50% Glycerol, 0.5% BSA and 0.02% Sodium Azide.
<b>Isotype</b>	IgG
<b>Storage</b>	Store at -20°C for up to 1 year from the date of receipt, and avoid repeat freeze-thaw cycles.
<b>Instruction</b>	

### TARGET INFORMATION

<b>Gene ID</b>	1969
<b>Gene Symbol</b>	EPHA2
<b>Uniprot ID</b>	EPHA2_HUMAN
<b>Immunogen</b>	Synthesized phospho-peptide around the phosphorylation site of human EphA2 (phospho Tyr588)
<b>Immunogen Region</b>	
<b>Specificity</b>	Phospho-EPHA2-Tyr588 polyclonal antibody (Ephrin Type-A Receptor 2) binds to endogenous Ephrin Type-A Receptor 2 only when phosphorylated at Tyr588.
<b>Immunogen Sequence</b>	



Western blot analysis of lysates from HepG2 cell, using phospho-EphA2 (Phospho-Tyr588) antibody.



Western blot analysis of various cells using Phospho-EphA2 (Y588) Polyclonal Antibody

This product is suitable for in-vitro studies under the RESEARCH USE ONLY [RUO] licence. This product must not be used as for diagnostic or other medical purposes.  
St John's Laboratory Ltd, Knowledge Dock Business Centre, University Way, London, E16 2RD | Tel: 0208 223 3081